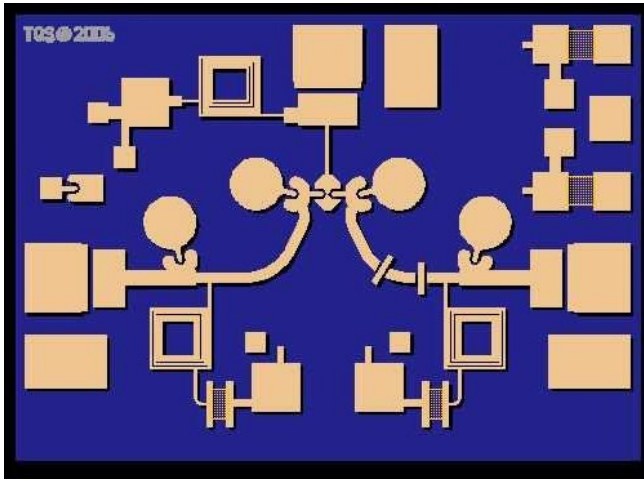


## 4 - 20 GHz VPIN SPDT Switch

## TGS2302



### Key Features

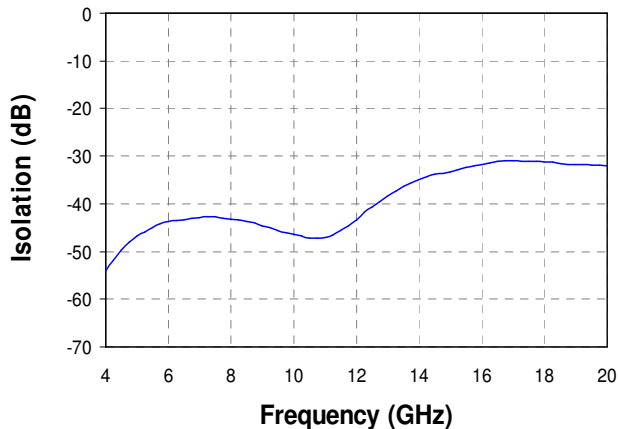
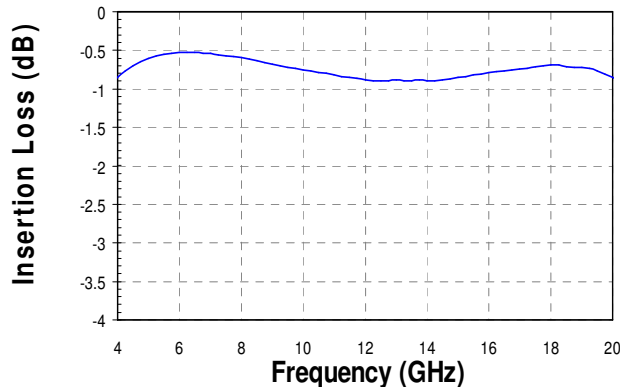
- 4-20 GHz High Isolation SPDT
- < 0.9 dB Typical Insertion Loss
- 35 dB Nominal Isolation
- 12 dB Typical Return Loss
- On-Chip Bias Network
- DC blocked at RF ports
- Chip dimensions: 2.24 x 1.63 x 0.10 mm  
(0.087 x 0.063 x 0.004 in)

### Primary Applications

- EW Receivers
- Radar
- Communications Systems

### Measured Fixtured Data

I<sub>control</sub> = ± 20mA



### Product Description

The TriQuint TGS2302 is a 4-20 GHz Single Pole Double Throw (SPDT) Switch. This part is designed using TriQuint's proven standard VPIN production process.

The TGS2302 provides a nominal 0.9 dB insertion loss, 12 dB return loss, and 35 dB isolation.

The TGS2302 integrates DC blocking capacitors on all ports and includes decoupled DC bias pads to reduce the number of off-chip components.

The part is ideally suited for EW receivers, radar, and communication systems.

Evaluation Boards are available upon request.

Lead-free and RoHS compliant.

*Note: This device is early in the characterization process prior to finalizing all electrical specifications. Specifications are subject to change without notice.*

**TABLE I  
MAXIMUM RATINGS**

Symbol	Parameter 1/	Value	Notes
V <sup>+</sup>	Positive Supply Voltage	+3 V	2/, 3/
V <sup>-</sup>	Negative Supply Voltage	-3 V	
I <sup>+</sup>	Positive Supply Current (Quiescent)	22 mA	2/ 3/
P <sub>IN</sub>	Input Continuous Wave Power	24 dBm	3/
P <sub>D</sub>	Power Dissipated	0.38 W	3/ 4/
T <sub>M</sub>	Mounting Temperature (30 Seconds)	320 °C	
T <sub>STG</sub>	Storage Temperature	-65 to 150 °C	

- 1/ These ratings represent the maximum operable values for this device.
- 2/ V<sub>max</sub><sup>+</sup> and I<sub>max</sub><sup>+</sup> are both per bias pad.
- 3/ Combinations of supply voltage, supply current, input power, and output power shall not exceed P<sub>D</sub>.
- 4/ When operated at this bias condition with a base plate temperature of 70 °C, the median life is reduced to TBD hours.

**TABLE II  
FUNCTION TABLE**

STATE	RF-A	RF-B	I <sub>control-A</sub> *	I <sub>control-B</sub> *
1	Low-Loss	Isolated	+20 mA	-20mA
2	Isolated	Low-Loss	-20mA	+20 mA

**\* Typical DC voltage to achieve ±20 mA at I<sub>control</sub> node is 2.6-2.7 V**

**TABLE III**  
**DC PROBE TABLE**  
(T<sub>A</sub> = 25 °C, Nominal)

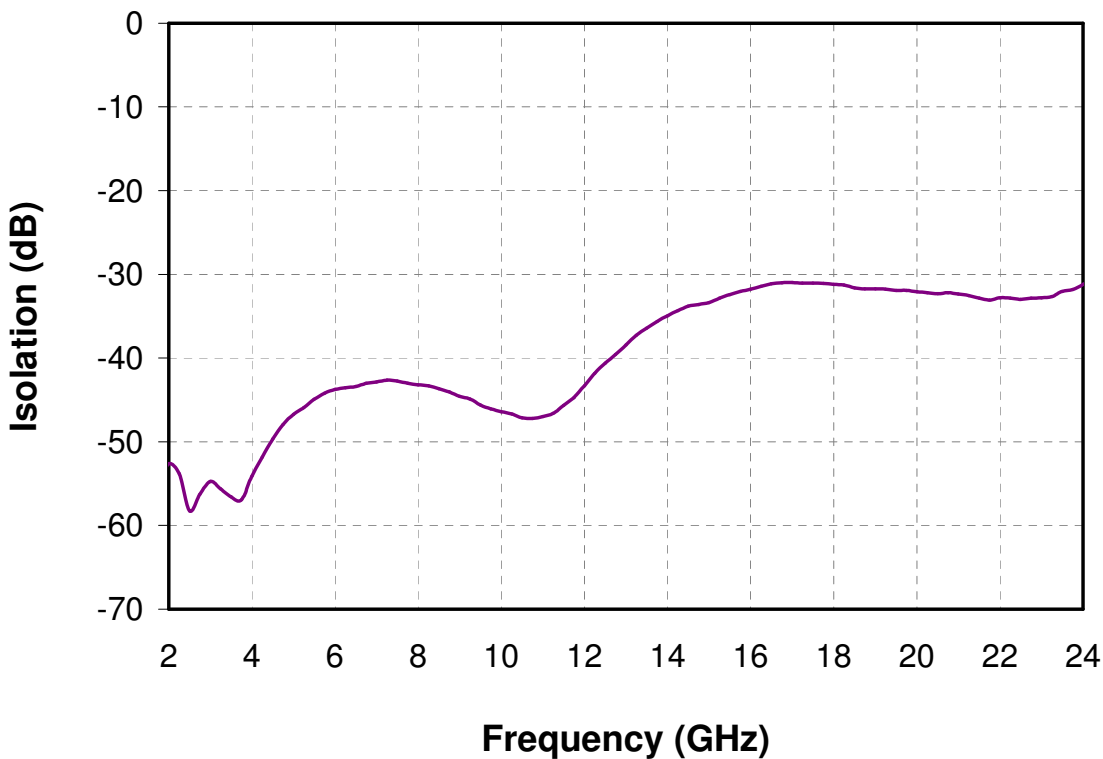
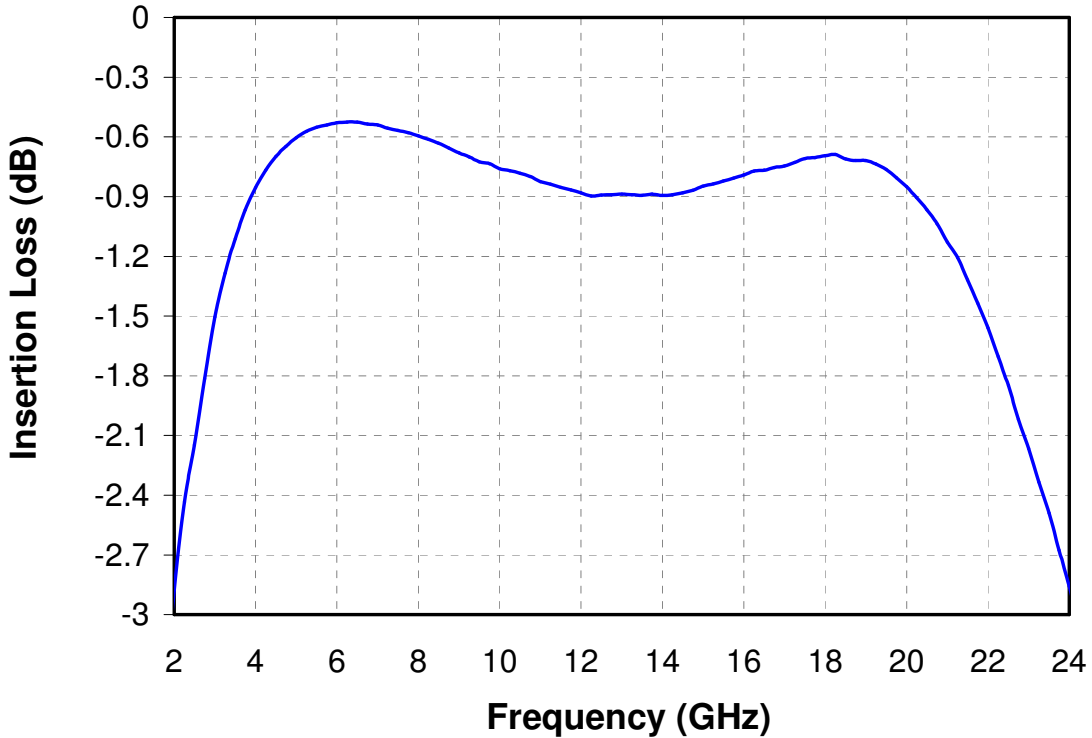
SYMBOL	PARAMETER	TYPICAL	UNITS
R <sub>F</sub> @ I <sub>F</sub> = 10-20mA	Forward On-Resistance	3	Ω
B <sub>R</sub> @ I <sub>R</sub> = 10 μA	Breakdown Voltage	-40	V

**TABLE IV**  
**RF CHARACTERIZATION TABLE**  
(T<sub>A</sub> = 25 °C, Nominal)  
I<sub>control</sub> = ± 20mA

PARAMETER	THROUGH PATH IDENTIFICATION	TEST CONDITION	NOMINAL	UNITS
Insertion Loss	RF Input to RF Output A	f = 4 – 20 GHz	0.9	dB
Isolation	RF Input to RF Output B	f = 4 – 20 GHz	35	dB
Input Return Loss	RF Input to RF Output A RF Input to RF Output B	f = 4 – 20 GHz	12	dB
Output Return Loss	RF Input to RF Output A RF Input to RF Output B	f = 4 – 20 GHz	12	dB

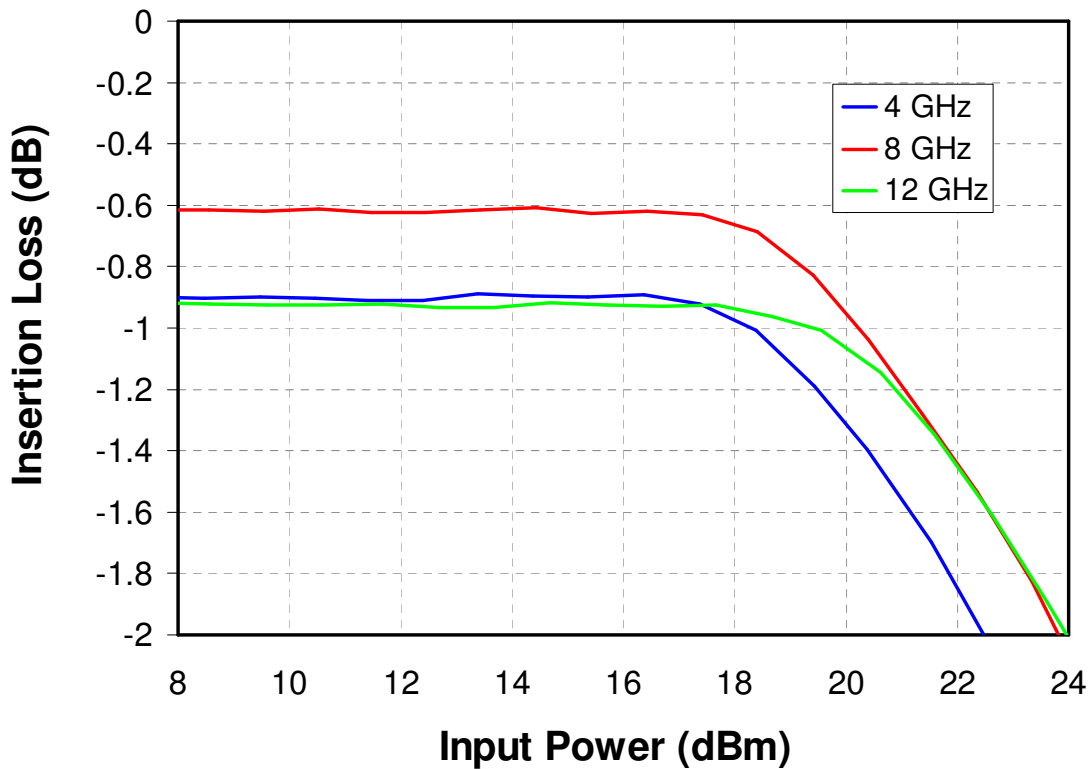
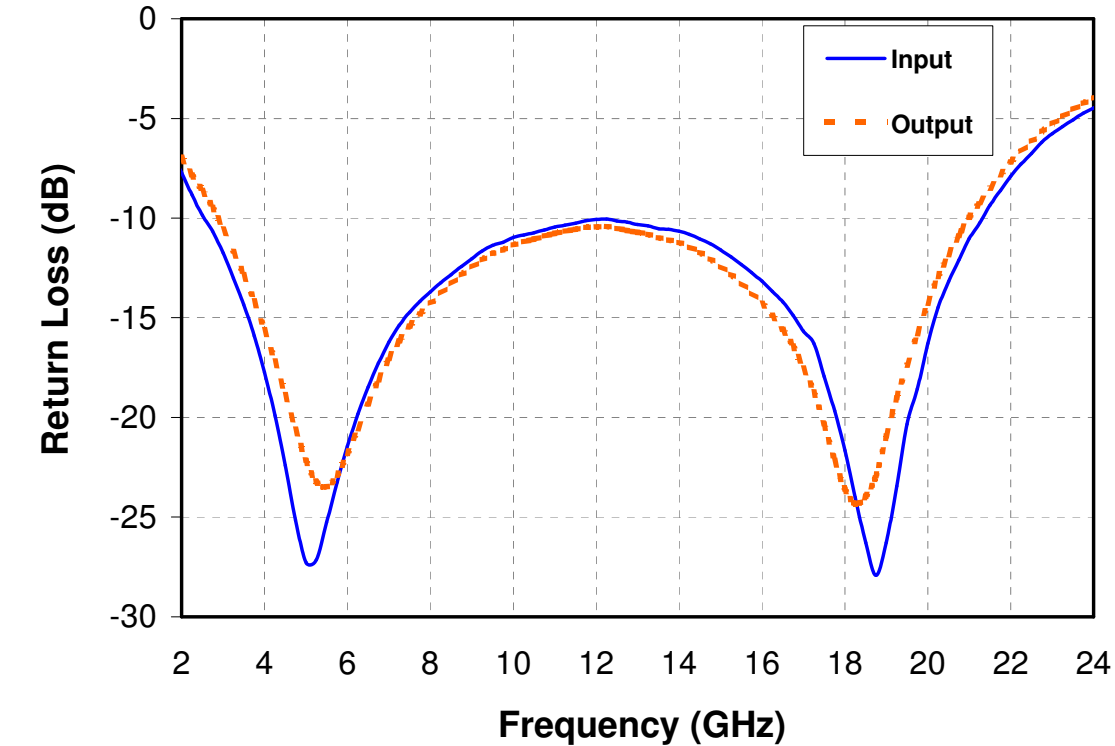
### Measured Fixtured Data

Bias Conditions:  $I_{control} = \pm 20$  mA

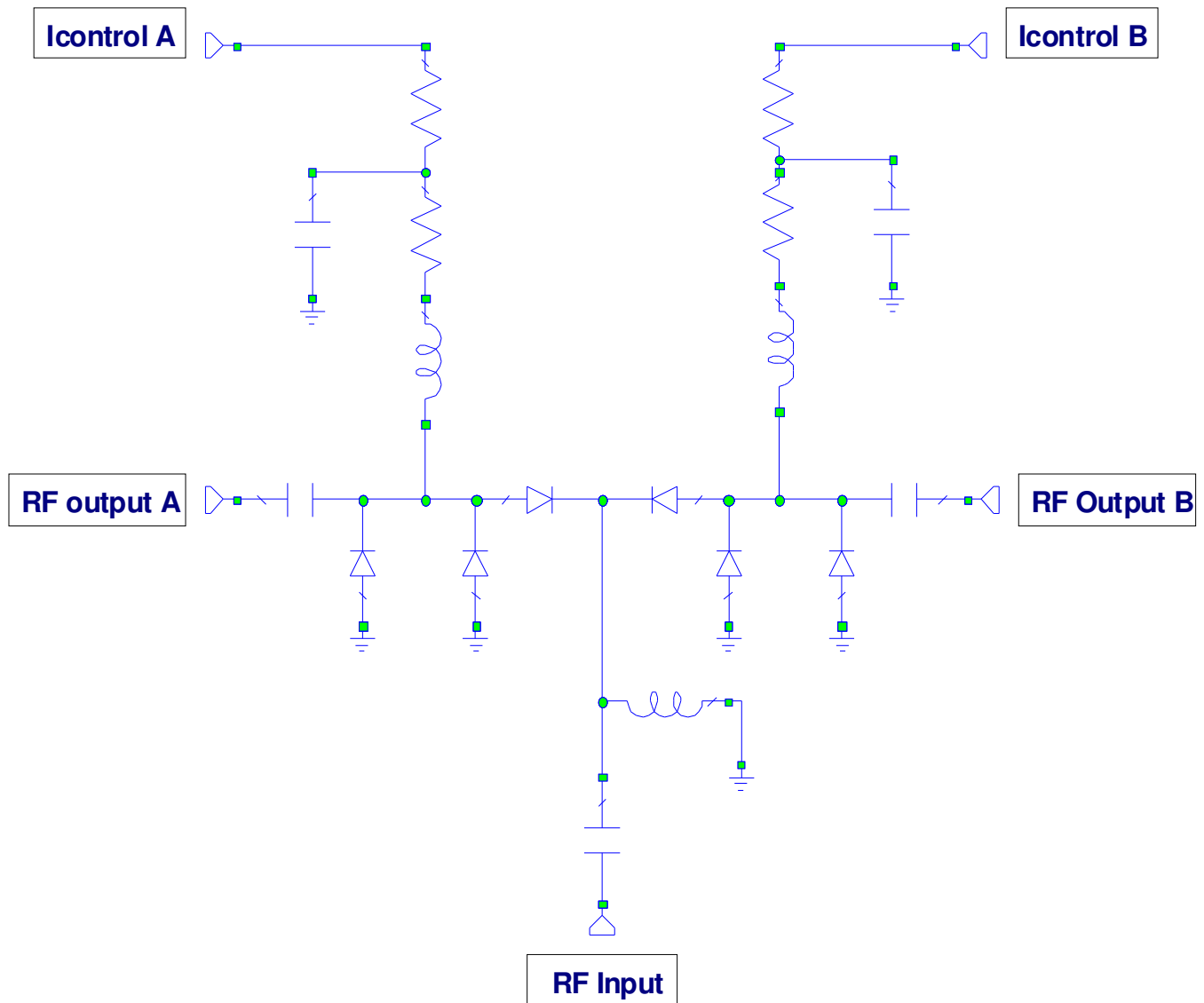


**Measured Fixtured Data**

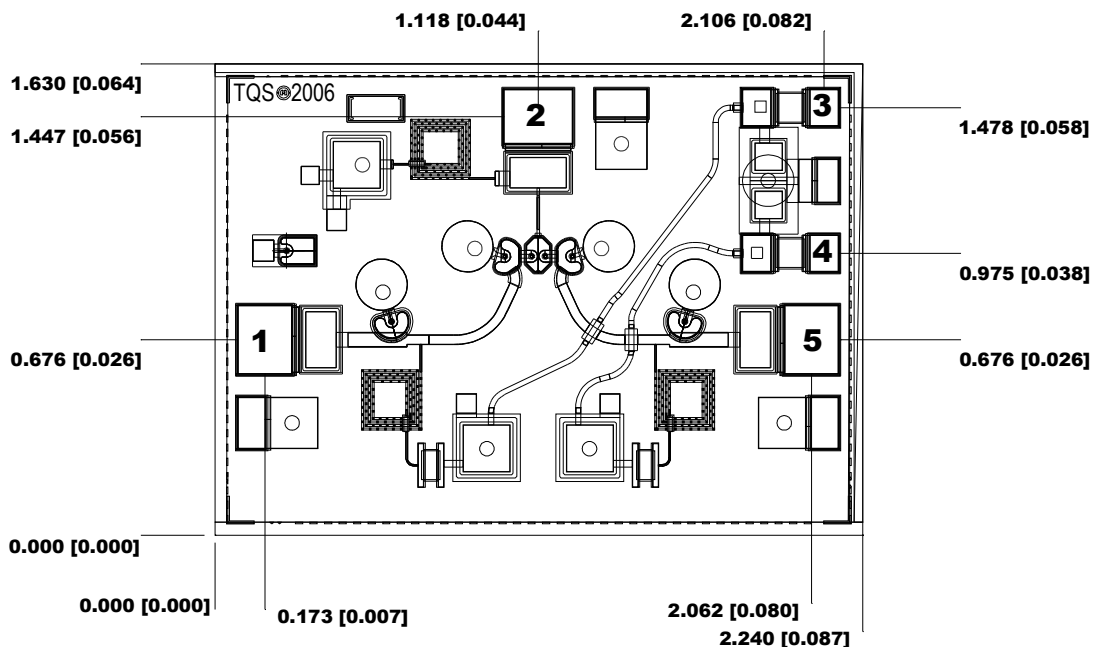
Bias Conditions:  $I_{control} = \pm 20 \text{ mA}$



### Equivalent Schematic



**Mechanical Drawing**



**Units: millimeters (inches)**

**Thickness: 0.100 (0.004)**

**Chip edge to bond pad dimensions are shown to center of bond pad**

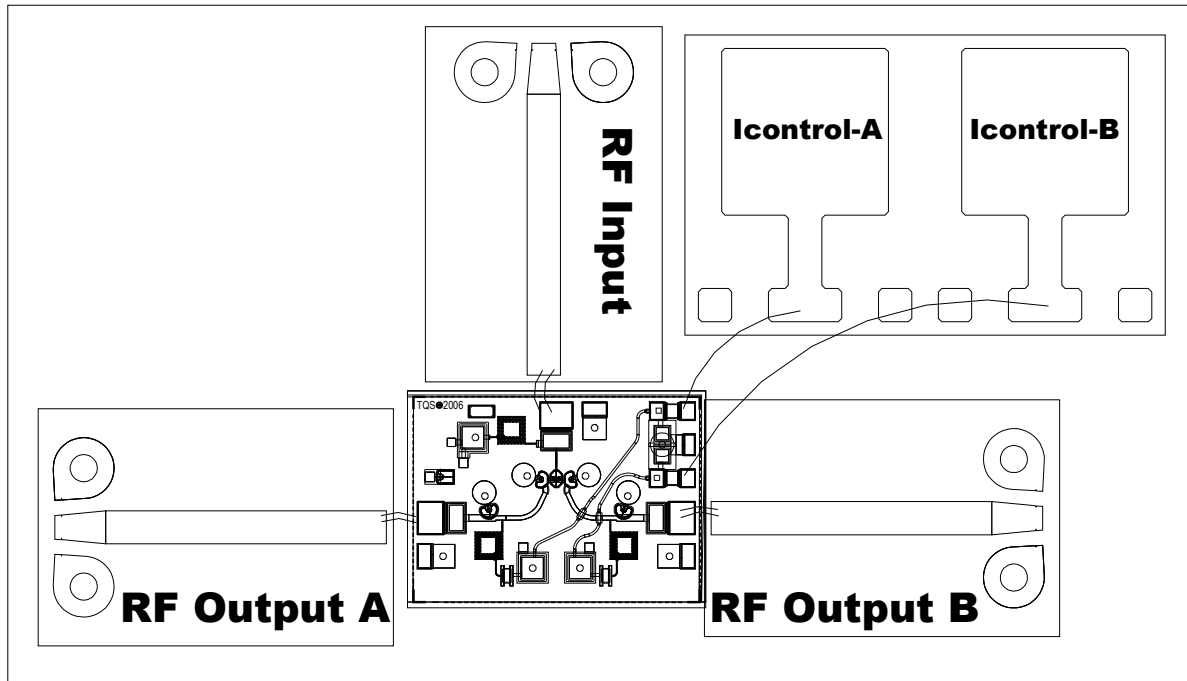
**Chip size tolerance: +/- 0.051 (0.002)**

**GND IS BACKSIDE OF MMIC**

<b>Bond pad #1</b>	<b>(RF Output A)</b>	<b>0.193 x 0.243 (0.008 x 0.010)</b>
<b>Bond pad #2</b>	<b>(RF Input)</b>	<b>0.243 x 0.193 (0.010 x 0.008)</b>
<b>Bond pad #3</b>	<b>(Icontrol-A)</b>	<b>0.105 x 0.132 (0.004 x 0.005)</b>
<b>Bond pad #4</b>	<b>(Icontrol-B)</b>	<b>0.105 x 0.132 (0.004 x 0.005)</b>
<b>Bond pad #5</b>	<b>(RF Output B)</b>	<b>0.193 x 0.243 (0.008 x 0.010)</b>

***GaAs MMIC devices are susceptible to damage from Electrostatic Discharge. Proper precautions should be observed during handling, assembly and test.***

## Assembly Drawing



Note:

± 20mA control lines (Icontrol-A, Icontrol-B) use on-chip resistors for diode current control.

***GaAs MMIC devices are susceptible to damage from Electrostatic Discharge. Proper precautions should be observed during handling, assembly and test.***



## **Assembly Process Notes**

Reflow process assembly notes:

- Use AuSn (80/20) solder with limited exposure to temperatures at or above 300 °C for 30 sec.
- An alloy station or conveyor furnace with reducing atmosphere should be used.
- No fluxes should be utilized.
- Coefficient of thermal expansion matching is critical for long-term reliability.
- Devices must be stored in a dry nitrogen atmosphere.

Component placement and adhesive attachment assembly notes:

- Vacuum pencils and/or vacuum collets are the preferred method of pick up.
- Air bridges must be avoided during placement.
- The force impact is critical during auto placement.
- Organic attachment can be used in low-power applications.
- Curing should be done in a convection oven; proper exhaust is a safety concern.
- Microwave or radiant curing should not be used because of differential heating.
- Coefficient of thermal expansion matching is critical.

Interconnect process assembly notes:

- Thermosonic ball bonding is the preferred interconnect technique.
- Force, time, and ultrasonics are critical parameters.
- Aluminum wire should not be used.
- Discrete FET devices with small pad sizes should be bonded with 0.0007-inch wire.
- Maximum stage temperature is 200 °C.

***GaAs MMIC devices are susceptible to damage from Electrostatic Discharge. Proper precautions should be observed during handling, assembly and test.***



## Стандарт Электрон Связь

Мы молодая и активно развивающаяся компания в области поставок электронных компонентов. Мы поставляем электронные компоненты отечественного и импортного производства напрямую от производителей и с крупнейших складов мира.

Благодаря сотрудничеству с мировыми поставщиками мы осуществляем комплексные и плановые поставки широчайшего спектра электронных компонентов.

Собственная эффективная логистика и склад в обеспечивает надежную поставку продукции в точно указанные сроки по всей России.

Мы осуществляем техническую поддержку нашим клиентам и предпродажную проверку качества продукции. На все поставляемые продукты мы предоставляем гарантию .

Осуществляем поставки продукции под контролем ВП МО РФ на предприятия военно-промышленного комплекса России , а также работаем в рамках 275 ФЗ с открытием отдельных счетов в уполномоченном банке. Система менеджмента качества компании соответствует требованиям ГОСТ ISO 9001.

Минимальные сроки поставки, гибкие цены, неограниченный ассортимент и индивидуальный подход к клиентам являются основой для выстраивания долгосрочного и эффективного сотрудничества с предприятиями радиоэлектронной промышленности, предприятиями ВПК и научно-исследовательскими институтами России.

С нами вы становитесь еще успешнее!

### Наши контакты:

**Телефон:** +7 812 627 14 35

**Электронная почта:** [sales@st-electron.ru](mailto:sales@st-electron.ru)

**Адрес:** 198099, Санкт-Петербург,  
Промышленная ул, дом № 19, литера Н,  
помещение 100-Н Офис 331