
Sensor EXP Evaluation Board USER's GUIDE

1. Introduction

This Sensor-EXP-EVB is a hardware plugin card for the EFM32 starter kits (STKs). It contains the Si7013 humidity and temperature sensor as well as the Si1147 UV and proximity sensor. A weather station software demo is available to download to the Zero or Tiny Gecko STK through simplicity studio. When downloaded to the EFM32ZG-STK3200 Zero Gecko STK or the EFM32TG-STK3300 Tiny Gecko STK, the demo displays humidity, temperature, and UV index and performs gesture detection. Right or left gestures move the display type and, on the temperature screen, up or down gestures move the display between °C or °F.

1.1. Features

- Si7013 Humidity and Temperature sensor
- Si1147 proximity sensor
- 3 IR LEDs for gesture detection
- 20-pin expansion header
- Battery operation with long battery life

1.2. Getting Started

The first step to get started with your new Sensor-EXP-EVB is to go to www.silabs.com/simplicity-studio.

The simplicity studio software package contains all the tools, drivers, software examples and documentation needed to use the Sensor-EXP-EVB.

You will need to connect the Sensor-EXP-EVB to the EFM32ZG-STK3200 Zero Gecko STK or the EFM32TG-STK3300 Tiny Gecko STK. The demo code can be loaded using the USB cable and J-Link debug interface.

2. Weather Station Demo

2.1. Loading the Demo

Connect the USB cable to the STK and launch Simplicity Studio. Click on “Detect connected device” then click on the Demos button (top right) and select the Sensor-EXP weather station demo from the list. Make sure the Bat/Dbg switch on the STK is set to DBG and click Start to download the demo. The following figures show the Zero Gecko STK screens.

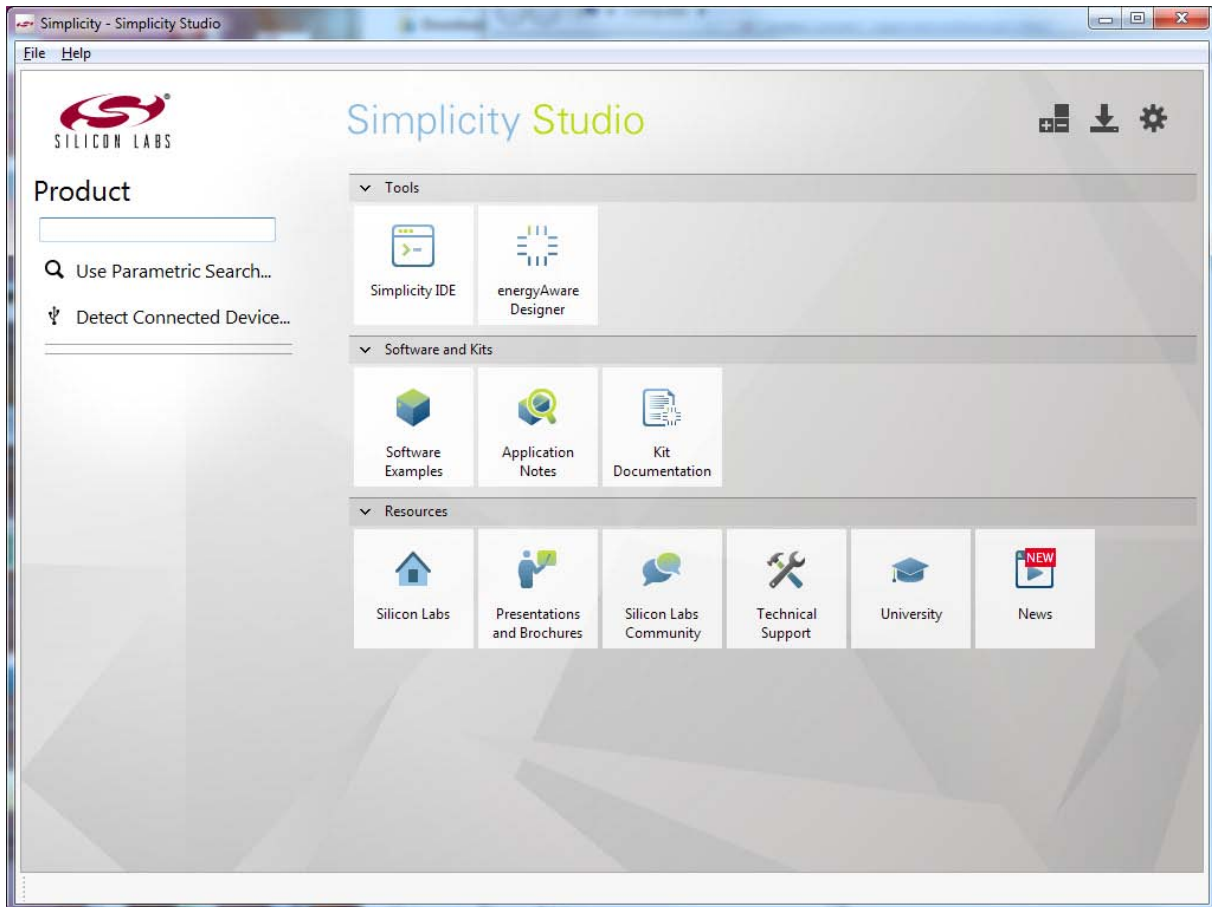


Figure 1. Simplicity Studio

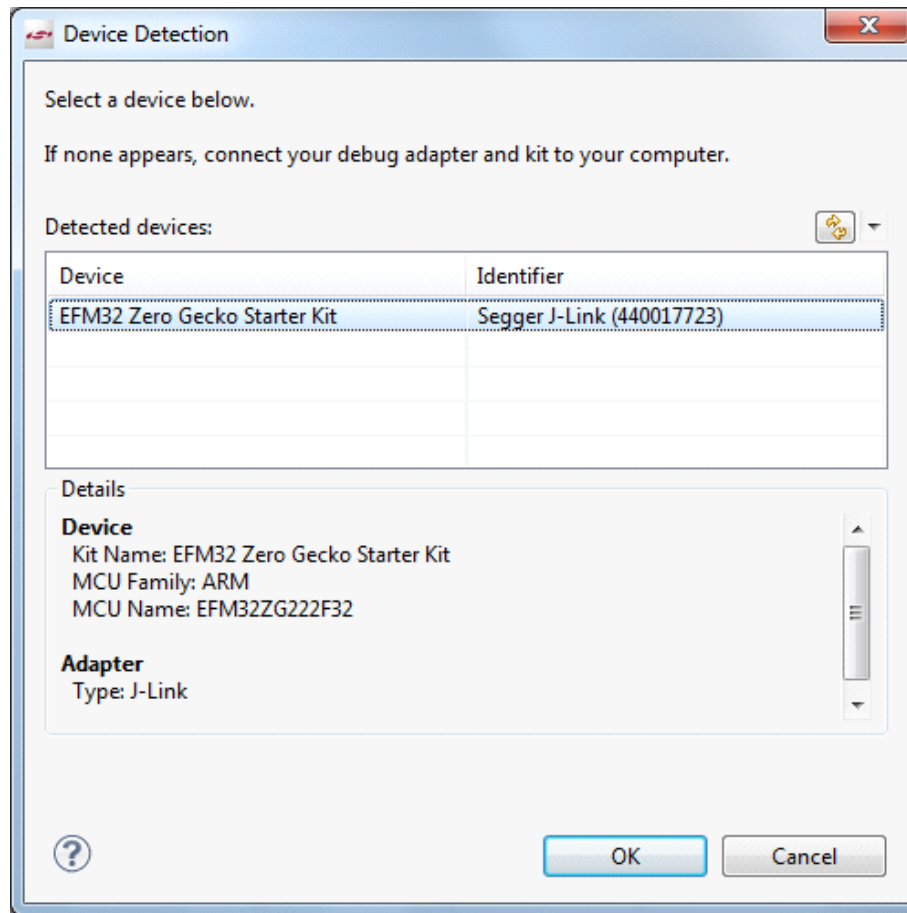


Figure 2. Device Detection

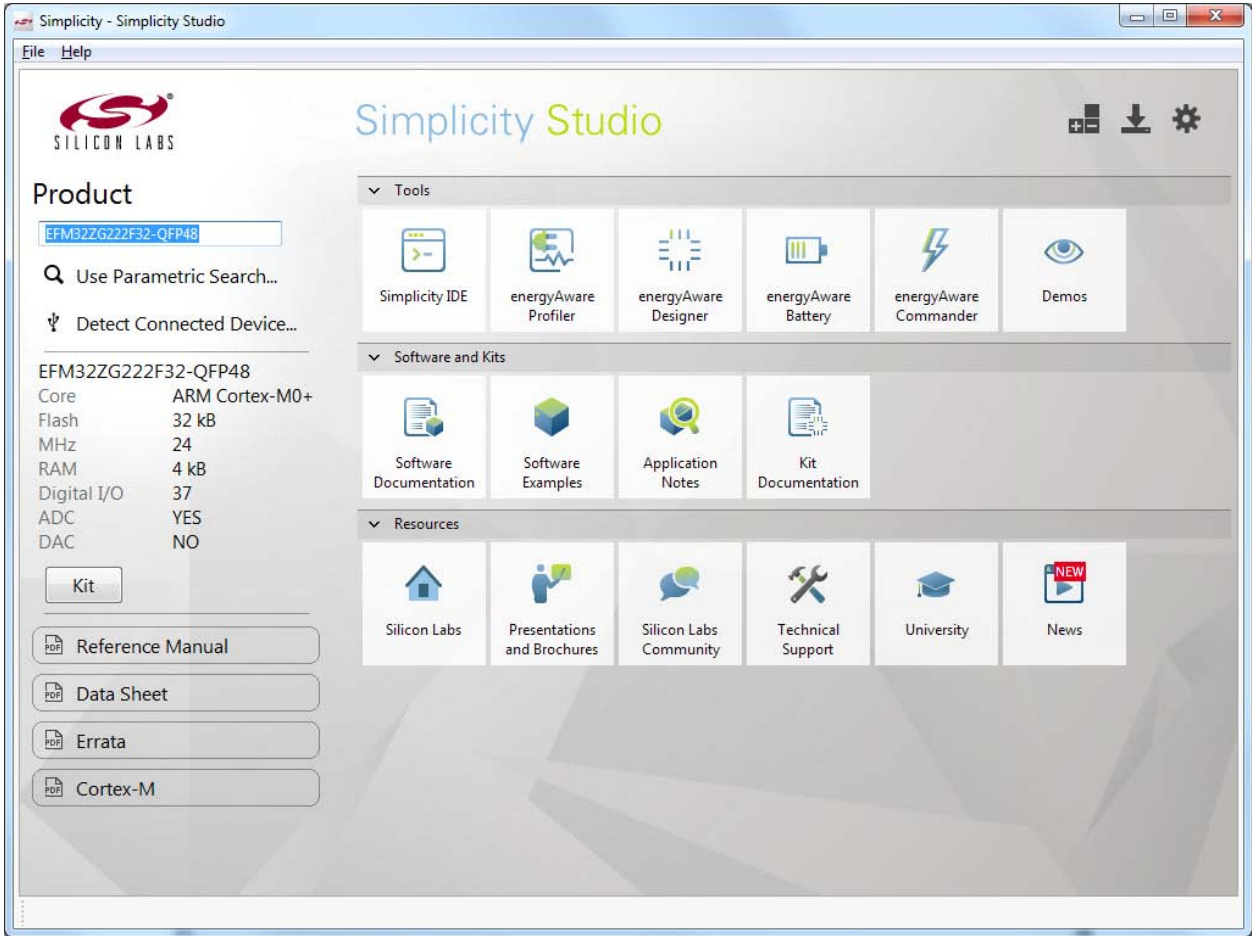


Figure 3. Select Demos

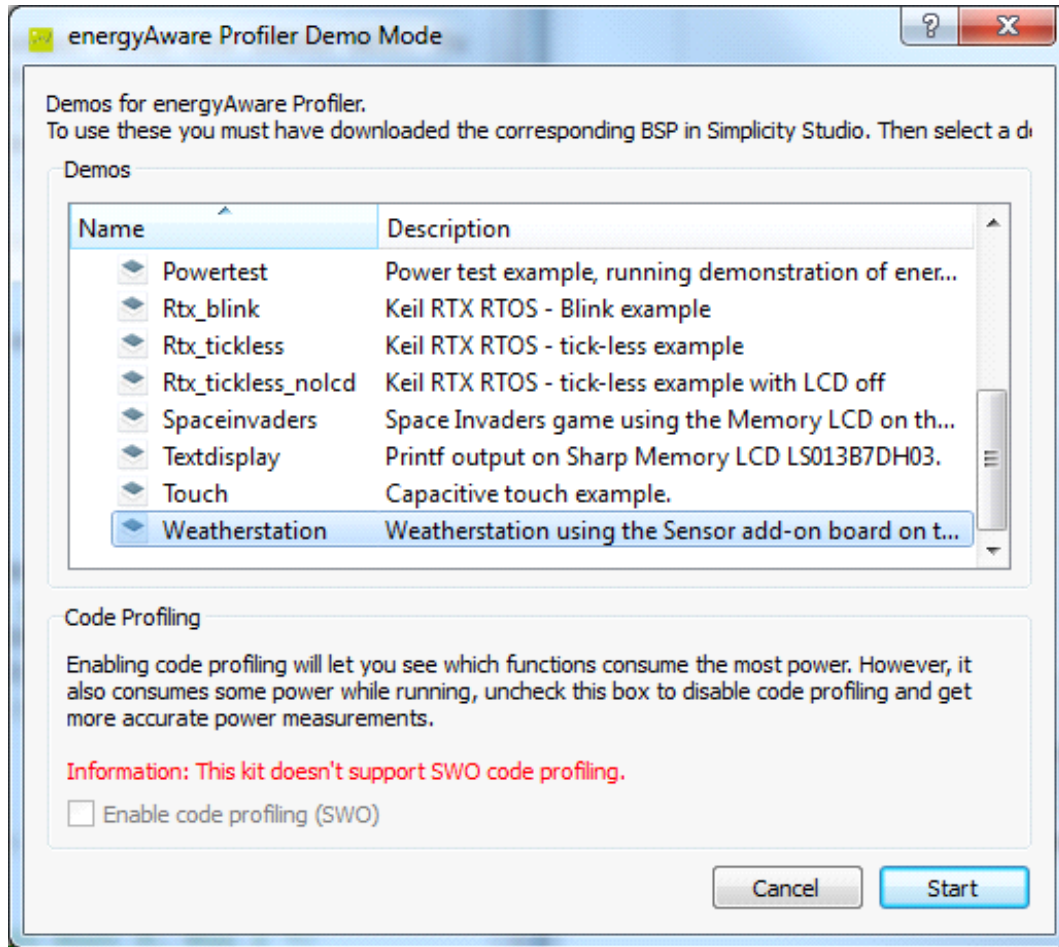


Figure 4. Demo Selection

2.2. Using the Demo

After download, the USB cable can be disconnected and the demo will run from battery power by switching the Bat/Dbg switch to battery.

The demonstration will first show a start screen with some basic instructions. In order to conserve power the demonstration code wakes up every few seconds and looks for a proximity event before looking for gestures. To initiate a proximity event, hold your hand (with fingers closed) over the Sensor-EXP-EVB. Once the proximity event has been detected, gesture detection is enabled. The gesture control state is fairly high-power compared to the idle state, so the code will automatically terminate gesture detection after one minute of inactivity. Swiping your hand across the Sensor-EXP-EVB in left and right motions will change the display as shown in Figure 5.

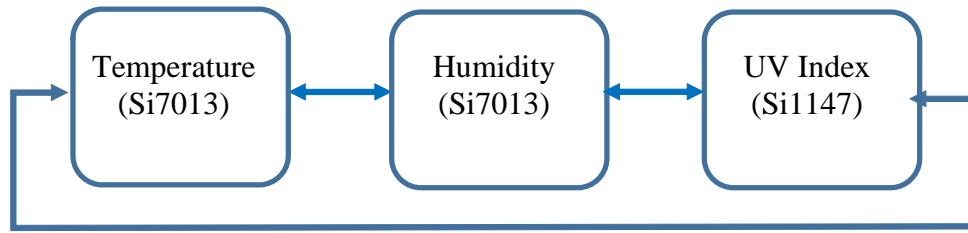


Figure 5. Displays

While on the temperature display, an up or down swipe motion will change the units to °C or °F.

3. Block Diagram

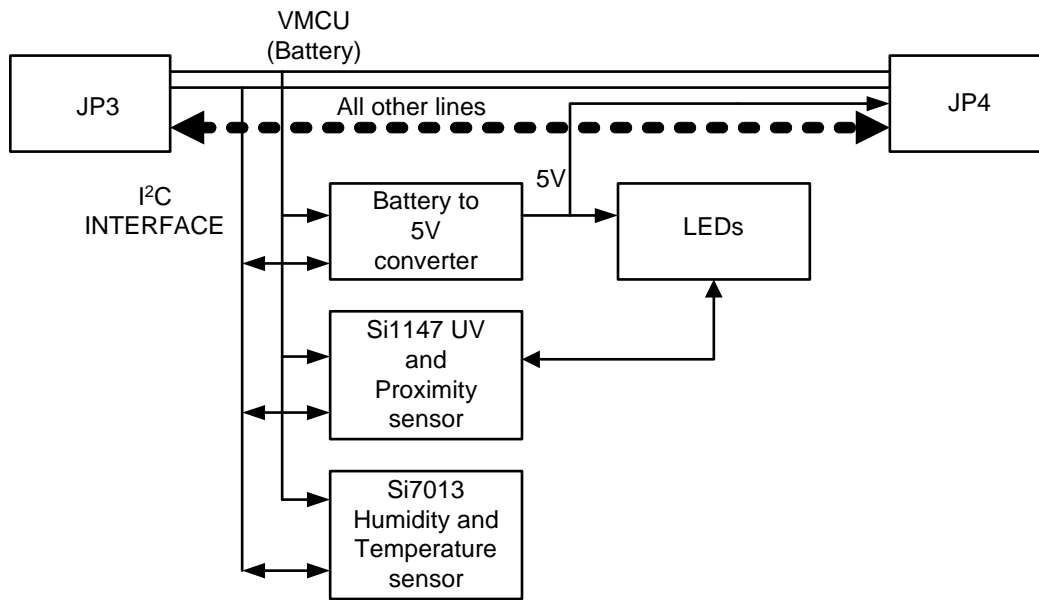


Figure 6. Sensor EXP Component Layout

Sensor EXP EVB UG

4. EXP Hardware Layout

4.1. Sensor-EXP-Evaluation Board

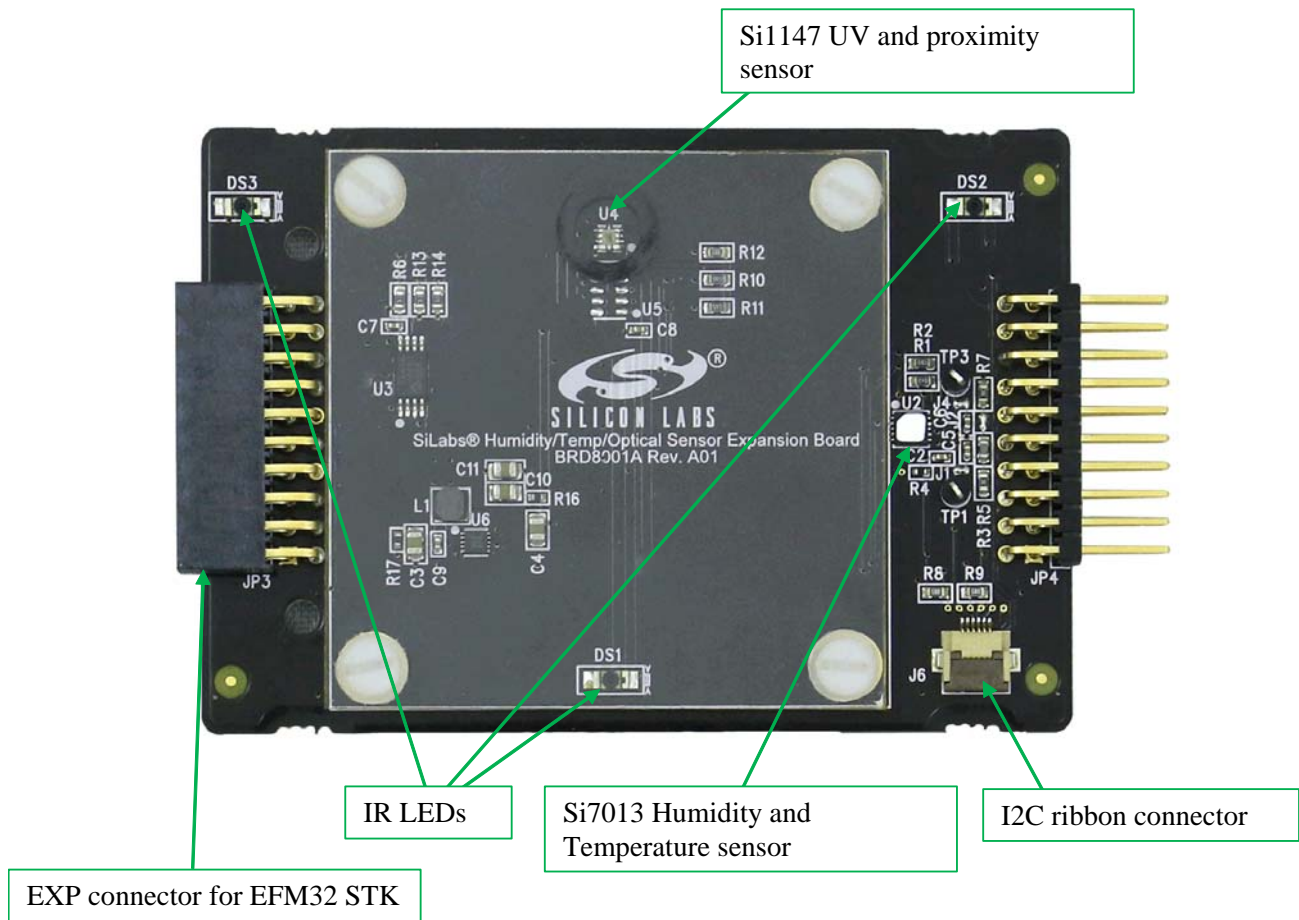


Figure 7. Assembled Demo Platform

4.2. Sensor-EXP-EVB Connected to Zero Gecko STK



Figure 8. Sensor-EXP-EVB Connected to Zero Gecko STK

Hover hand to create a proximity event (Figure 9).

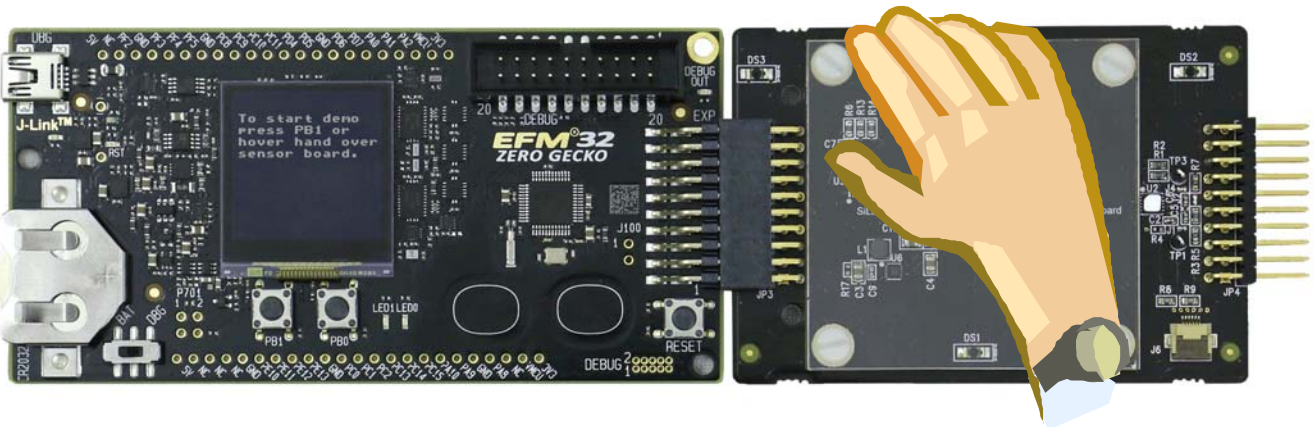


Figure 9. Hover Gesture

Swipe hand right or left to change display (Figure 10). Swipe up and down to change temperature display units.

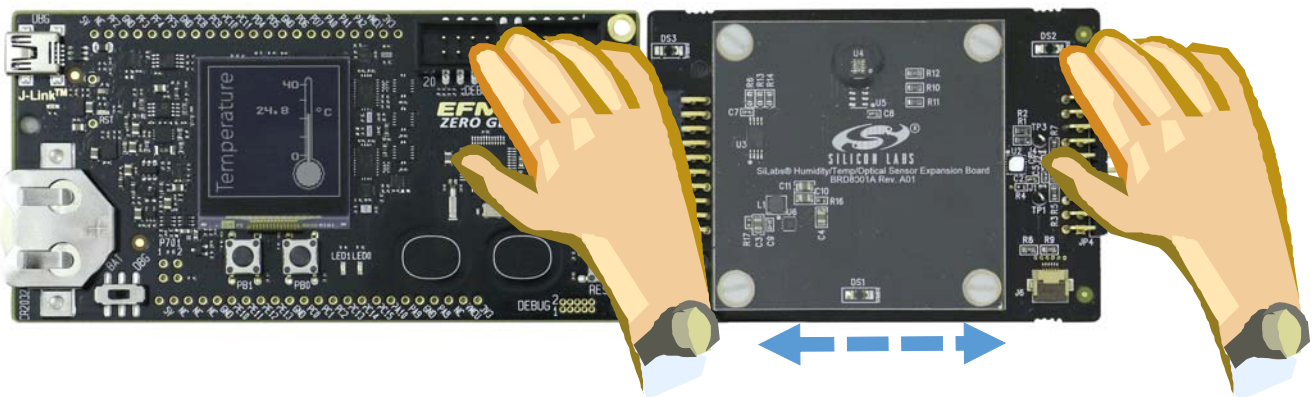


Figure 10. Left/Right Swipe Gesture

5. Connectors

On the left hand side of the board there is a right-angle 20-pin expansion header is to allow connection to the EFM32 STK board. This connector is not currently compatible with Wonder, Giant, or Leopard Gecko STKs. However, with hardware modifications, the sensor-EXP-EVB can be used with these STKs as well. On the right hand side of the board there is another connector to allow connection to another plugin card. J6 is a flat ribbon cable connector to connect other devices such as additional sensors to the I²C bus.

6. Schematics, Assembly Drawings and BOM

The schematics, assembly drawings and bill of materials (BOM) for the Sensor-EXP-EVB are available through simplicity studio when the EXP documentation package has been installed.

DOCUMENT CHANGE LIST

Revision 0.1 to Revision 0.2

- Added Tiny Gecko.
- Updated Figure 7 on page 8.
- Updated Figure 8 on page 9.
- Updated Figure 9 on page 9.
- Updated Figure 10 on page 9.

CONTACT INFORMATION

Silicon Laboratories Inc.

400 West Cesar Chavez

Austin, TX 78701

Tel: 1+(512) 416-8500

Fax: 1+(512) 416-9669

Toll Free: 1+(877) 444-3032

Please visit the Silicon Labs Technical Support web page:

<https://www.siliconlabs.com/support/pages/contacttechnicalsupport.aspx>

and register to submit a technical support request.

Patent Notice

Silicon Labs invests in research and development to help our customers differentiate in the market with innovative low-power, small size, analog-intensive mixed-signal solutions. Silicon Labs' extensive patent portfolio is a testament to our unique approach and world-class engineering team.

The information in this document is believed to be accurate in all respects at the time of publication but is subject to change without notice. Silicon Laboratories assumes no responsibility for errors and omissions, and disclaims responsibility for any consequences resulting from the use of information included herein. Additionally, Silicon Laboratories assumes no responsibility for the functioning of undescribed features or parameters. Silicon Laboratories reserves the right to make changes without further notice. Silicon Laboratories makes no warranty, representation or guarantee regarding the suitability of its products for any particular purpose, nor does Silicon Laboratories assume any liability arising out of the application or use of any product or circuit, and specifically disclaims any and all liability, including without limitation consequential or incidental damages. Silicon Laboratories products are not designed, intended, or authorized for use in applications intended to support or sustain life, or for any other application in which the failure of the Silicon Laboratories product could create a situation where personal injury or death may occur. Should Buyer purchase or use Silicon Laboratories products for any such unintended or unauthorized application, Buyer shall indemnify and hold Silicon Laboratories harmless against all claims and damages.

Silicon Laboratories and Silicon Labs are trademarks of Silicon Laboratories Inc.

Other products or brandnames mentioned herein are trademarks or registered trademarks of their respective holders.



**Стандарт
Электрон
Связь**

Мы молодая и активно развивающаяся компания в области поставок электронных компонентов. Мы поставляем электронные компоненты отечественного и импортного производства напрямую от производителей и с крупнейших складов мира.

Благодаря сотрудничеству с мировыми поставщиками мы осуществляем комплексные и плановые поставки широчайшего спектра электронных компонентов.

Собственная эффективная логистика и склад в обеспечивает надежную поставку продукции в точно указанные сроки по всей России.

Мы осуществляем техническую поддержку нашим клиентам и предпродажную проверку качества продукции. На все поставляемые продукты мы предоставляем гарантию .

Осуществляем поставки продукции под контролем ВП МО РФ на предприятия военно-промышленного комплекса России , а также работаем в рамках 275 ФЗ с открытием отдельных счетов в уполномоченном банке. Система менеджмента качества компании соответствует требованиям ГОСТ ISO 9001.

Минимальные сроки поставки, гибкие цены, неограниченный ассортимент и индивидуальный подход к клиентам являются основой для выстраивания долгосрочного и эффективного сотрудничества с предприятиями радиоэлектронной промышленности, предприятиями ВПК и научно-исследовательскими институтами России.

С нами вы становитесь еще успешнее!

Наши контакты:

Телефон: +7 812 627 14 35

Электронная почта: sales@st-electron.ru

Адрес: 198099, Санкт-Петербург,
Промышленная ул, дом № 19, литера Н,
помещение 100-Н Офис 331