

TLV62130EVM-505 and TLV62150EVM-505 Evaluation Modules

This user's guide describes the characteristics, operation, and use of the Texas Instruments TLV62130 and TLV62150 evaluation modules (EVM). The TLV62130EVM-505 and TLV62150EVM-505 evaluate the performance of the TLV62130 or TLV62150 IC in a standard buck regulator topology. The EVM converts a 4-V to 17-V input voltage to 3.3 V and provides up to 3 A (1 A for the TLV62150EVM-505) of output current. The user's guide includes setup instructions for the EVM, the printed-circuit board layout, the schematic diagram, the bill of materials, and test results for the EVM. After the release of the A-version devices in the summer of 2013, these EVMs are assembled with the TLV62130A or TLV62150A.

Contents

1	Introduction	2
2	Setup	3
3	TLV621x0EVM-505 Test Results	4
4	Board Layout	13
5	Schematic and Bill of Materials	16

List of Figures

1	Loop Response Measurement Modification	3
2	Efficiency With 1- μ H Inductor and FSW = LOW (High Frequency)	4
3	Efficiency With 2.2- μ H Inductor and FSW = LOW (High Frequency)	5
4	Efficiency With 2.2- μ H Inductor and FSW = HIGH (Low Frequency)	5
5	Load Regulation With 2.2- μ H Inductor and FSW = LOW (High Frequency)	6
6	Line Regulation With 2.2- μ H Inductor and FSW = LOW (High Frequency) and $I_{OUT} = 1$ A	6
7	Loop Response With 2.2- μ H Inductor and FSW = LOW (High Frequency) and $V_{IN} = 12$ V and $I_{OUT} = 1$ A	7
8	Input Voltage Ripple With 2.2- μ H Inductor and FSW = LOW (High Frequency) and $V_{IN} = 12$ V and $I_{OUT} = 1$ A	7
9	Output Voltage Ripple With 2.2- μ H Inductor and FSW = LOW (High Frequency) and $V_{IN} = 12$ V and $I_{OUT} = 1$ A	8
10	Output Voltage Ripple With 2.2- μ H Inductor and FSW = HIGH (Low Frequency) and $V_{IN} = 12$ V and $I_{OUT} = 1$ A	8
11	Load Transient Response With 1- μ H Inductor and $V_{IN} = 12$ V	9
12	Load Transient Response With 2.2- μ H Inductor and $V_{IN} = 12$ V	9
13	Start-Up on EN with 1-A Load and $V_{IN} = 12$ V	10
14	Shutdown on EN with 1-A Load and $V_{IN} = 12$ V	10
15	TLV62130 Prebias Start-Up and Shutdown on EN With 1-A Load and $V_{IN} = 12$ V	11
16	TLV62130A Prebias Start-Up and Shutdown on EN With 1-A Load and $V_{IN} = 12$ V	11
17	Thermal Performance With 1- μ H Inductor	12
18	Thermal Performance With 2.2- μ H Inductor	12
19	Assembly Layer	13
20	Top Layer Routing	13
21	Internal Layer-1 Routing	14
22	Internal Layer-2 Routing	14
23	Bottom Layer Routing	15

24 TLV621x0EVM-505 Schematic 16

List of Tables

1 Performance Specification Summary..... 2
 2 TLV621x0EVM-505 Bill of Materials 17

1 Introduction

The TLV62130 is a 3-A, synchronous, step-down converter in a 3x3-mm, 16-pin QFN package.
 The TLV62150 is a 1-A, synchronous, step-down converter in a 3x3-mm, 16-pin QFN package.

1.1 Background

The TLV62130EVM-505 (HPA505-004) uses the TLV62130A and is set to a 3.3-V output. The EVM operates with full-rated performance with an input voltage between 4 V and 17 V.

The TLV62150EVM-505 (HPA505-005) uses the TLV62150A and is set to a 3.3-V output. The EVM operates with full-rated performance with an input voltage between 4 V and 17 V.

1.2 Performance Specification

Table 1 provides a summary of the TLV621x0EVM-505 performance specifications. All specifications are given for an ambient temperature of 25°C.

Table 1. Performance Specification Summary

Specification	Test Conditions	Min	Typ	Max	Unit
Input Voltage		4		17	V
Output Voltage	PWM Mode of Operation	3.244	3.327	3.410	V
Output Current	TLV62130EVM-505	0		3000	mA
	TLV62150EVM-505	0		1000	mA
Peak Efficiency	TLV62130EVM-505, FSW = LOW (high frequency)		93.2%		
Peak Efficiency	TLV62150EVM-505, FSW = HIGH (low frequency)		95.0%		
Soft-Start Time			1.65		ms

1.3 Modifications

The printed-circuit board (PCB) for this EVM is designed to accommodate various modifications that affect the performance of the IC. Additional input and output capacitors can be added, the soft-start time can be changed, and the loop response of the IC can be measured.

1.3.1 Input and Output Capacitors

C2 is provided for an additional input capacitor. This capacitor is not required for proper operation but can be used to reduce the input voltage ripple.

C7 is provided for an input capacitor on the AVIN pin. This capacitor is required and populated on the TLV62130EVM-505. It may be added on the other EVM version but is not required.

C4 is provided for an additional output capacitor. This capacitor is not required for proper operation but can be used to reduce the output voltage ripple and to improve the load transient response. The total output capacitance must remain within the recommended range in the data sheet for proper operation.

1.3.2 Soft-Start Time

C5 controls the soft-start time of the output voltage on the TLV621x0EVM-505. It can be changed for a shorter or slower ramp up of V_{OUT} . Note that as the value of C5 is decreased, the inrush current increases.

1.3.3 Loop Response Measurement

The loop response of the TLV621x0EVM-505 can be measured with two simple changes to the circuitry. First, install a 10- Ω resistor across the pads in the middle of the back of the PCB. The pads are spaced to allow installation of 0805- or 0603-sized resistors. Second, cut the trace between the via on the output voltage and the trace that connects to the VOS pin via. These changes are shown in Figure 1. With these changes, an ac signal (10-mV, peak-to-peak amplitude recommended) can be injected into the control loop across the added resistor.

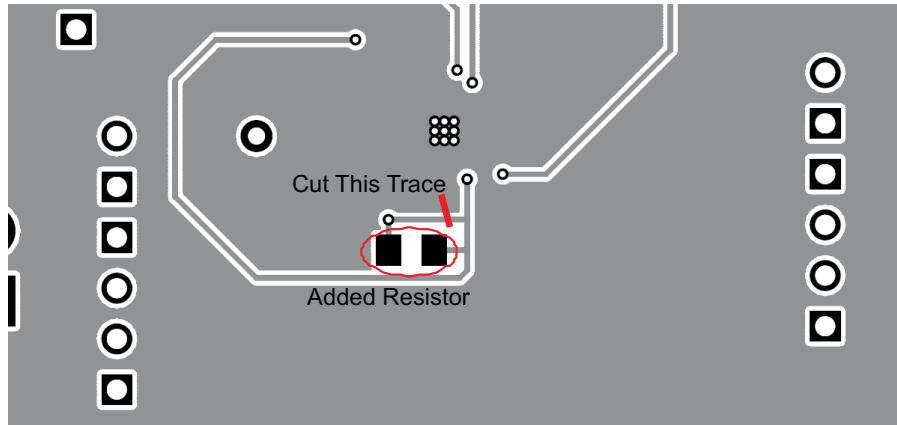


Figure 1. Loop Response Measurement Modification

2 Setup

This section describes how to properly use the TLV621x0EVM-505.

2.1 Input/Output Connector Descriptions

J1 – VIN	Positive input connection from the input supply for the EVM. Use when the steady-state input current is less than 1 A. Otherwise, use J8.
J2 – S+/S–	Input voltage sense connections. Measure the input voltage at this point.
J3 – GND	Return connection from the input supply for the EVM. Use when the steady-state input current is less than 1 A. Otherwise, use J8.
J4 – VOUT	Output voltage connection. Use when the steady-state output current is less than 1 A. Otherwise, use J9.
J5 – S+/S–	Output voltage sense connections. Measure the output voltage at this point.
J6 – GND	Output return connection. Use when the steady-state output current is less than 1 A. Otherwise, use J9.
J7 – PG/GND	The PG output appears on pin 1 of this header with a convenient ground on pin 2.
J8 – VIN/GND	Pin 1 is the positive input connection with pin 2, serving as the return connection. Use this terminal block if the steady-state input current is greater than 1 A.
J9 – VOUT/GND	Pin 2 is the output voltage connection with pin 1, serving as the output return connection. Use this terminal block if the steady-state output current is greater than 1 A.
J10 – SS/TR & GND	The SS/TR input appears on pin 1 of this header with a convenient ground on pin 2.
JP1 – EN	EN pin input jumper. Place the supplied jumper across ON and EN to turn on the IC. Place the jumper across OFF and EN to turn off the IC.
JP2 – DEF	DEF pin input jumper. Place the supplied jumper across HIGH and DEF to set the output voltage at 5% above nominal. Place the jumper across LOW and DEF to set the output voltage at the nominal level.

JP3 – FSW

FSW pin input jumper. Place the supplied jumper across 1.25 MHz and FSW to operate the IC at a reduced switching frequency of nominally 1.25 MHz. Place the jumper across 2.5 MHz and FSW to operate the IC at the full switching frequency of nominally 2.5 MHz.

JP4 – PG Pullup Voltage

PG pin pullup voltage jumper. Place the supplied jumper on JP4 to connect the PG pin pullup resistor to V_{out} . Alternatively, the jumper can be removed and a different voltage can be supplied on pin 2 to pull up the PG pin to a different level. This externally applied voltage must remain below 7 V.

2.2 Setup

To operate the EVM, set jumpers JP1 through JP4 to the desired positions per [Section 2.1](#). Connect the input supply to either J1 and J3 or J8, and connect the load to either J4 and J6 or J9.

3 TLV621x0EVM-505 Test Results

This section provides test results of the TLV621x0EVM-505.

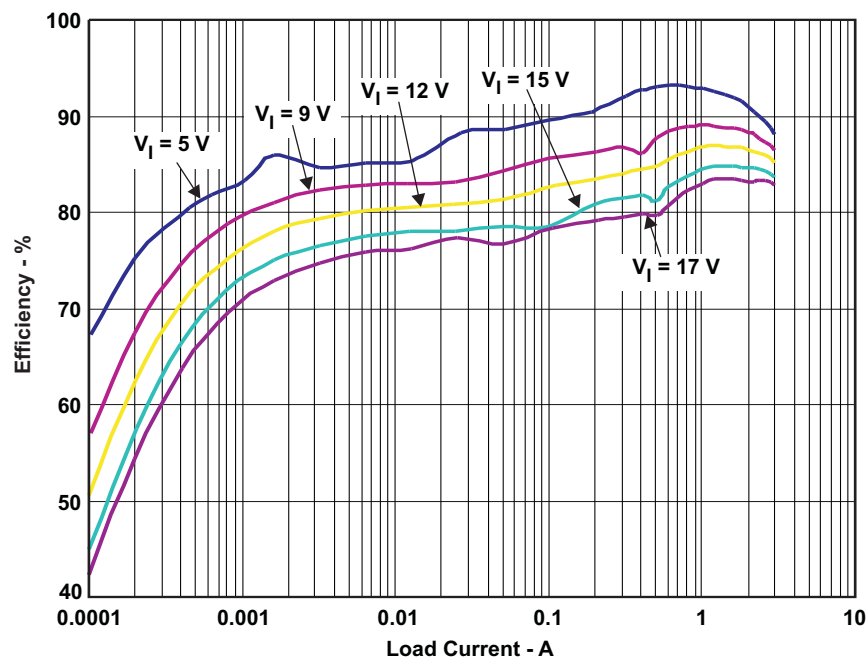


Figure 2. Efficiency With 1- μ H Inductor and FSW = LOW (High Frequency)

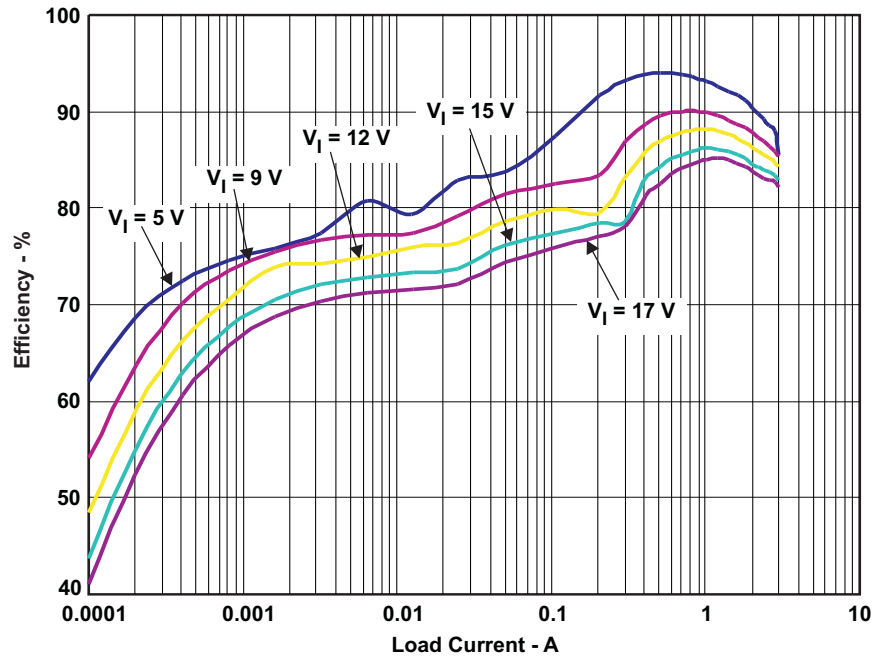


Figure 3. Efficiency With 2.2- μ H Inductor and FSW = LOW (High Frequency)

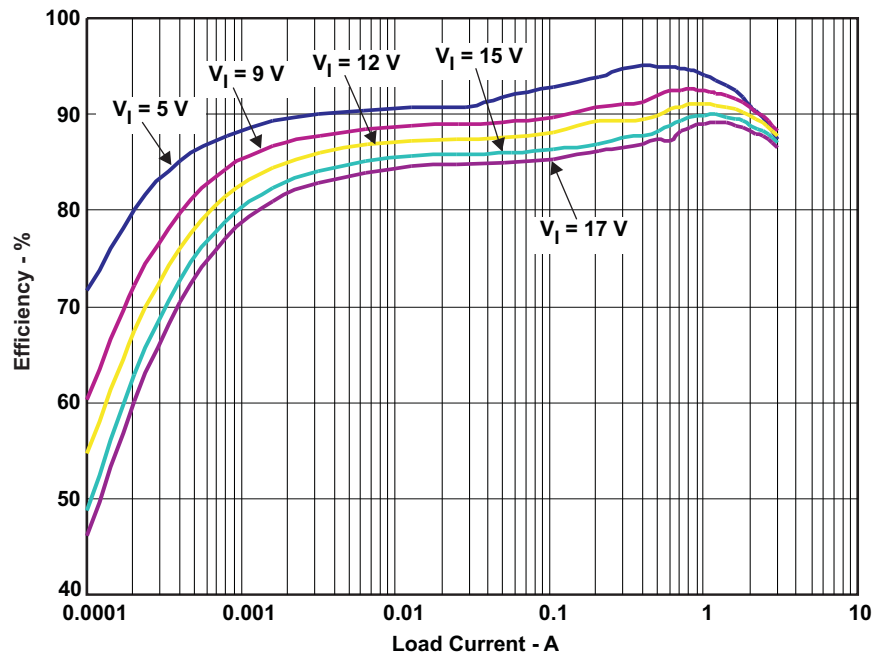


Figure 4. Efficiency With 2.2- μ H Inductor and FSW = HIGH (Low Frequency)

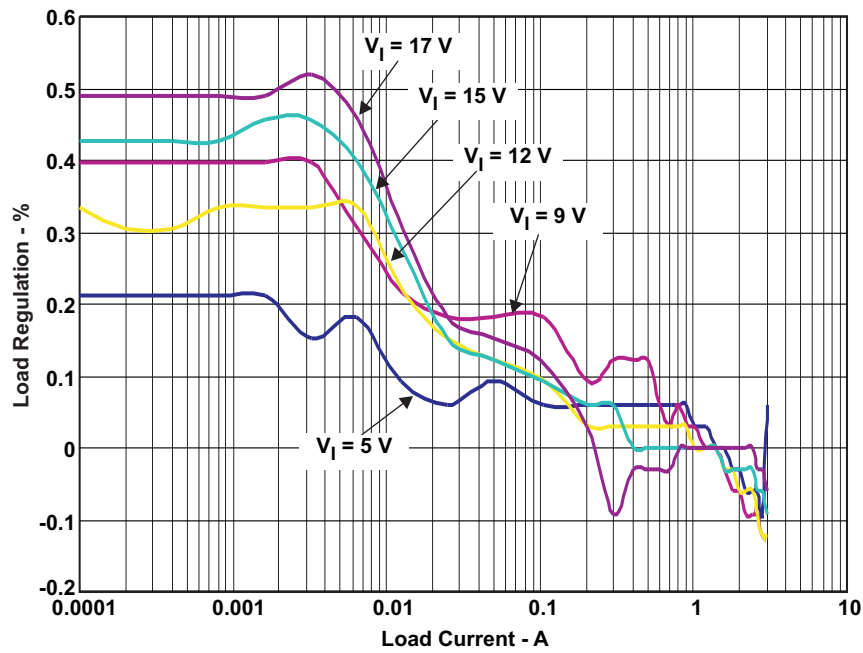


Figure 5. Load Regulation With 2.2- μ H Inductor and FSW = LOW (High Frequency)

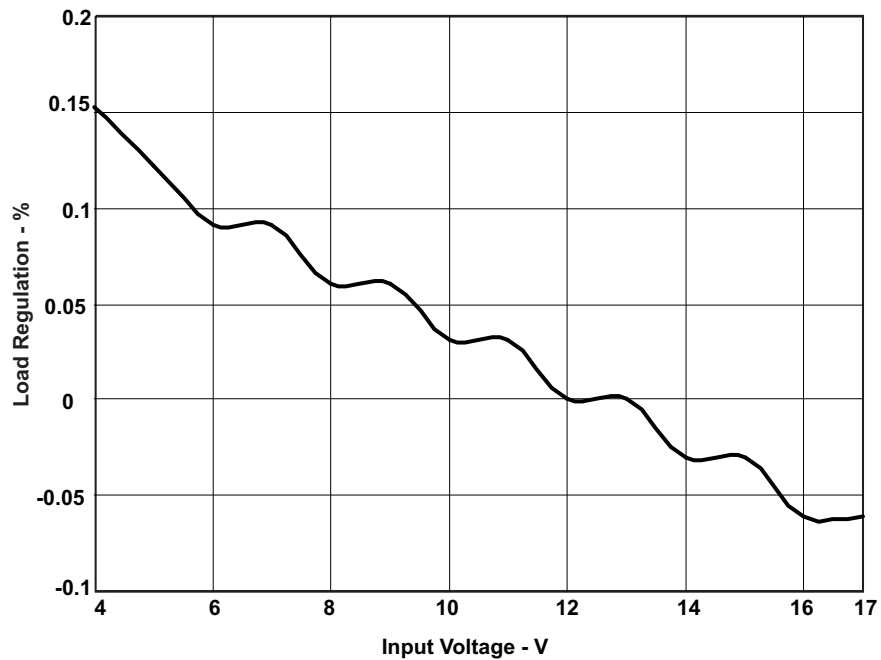


Figure 6. Line Regulation With 2.2- μ H Inductor and FSW = LOW (High Frequency) and $I_{OUT} = 1$ A

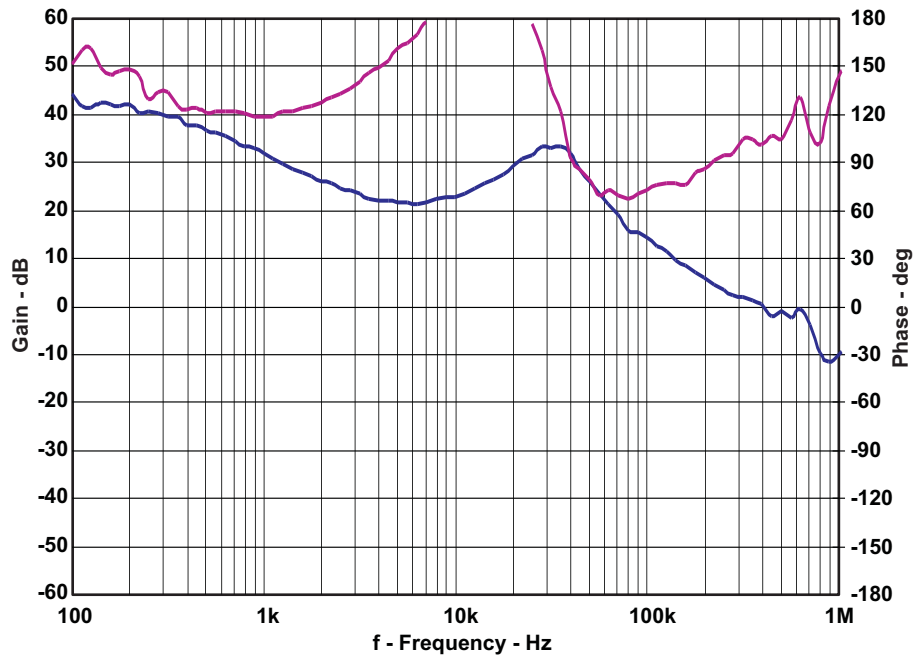


Figure 7. Loop Response With 2.2- μ H Inductor and FSW = LOW (High Frequency) and $V_{IN} = 12$ V and $I_{OUT} = 1$ A

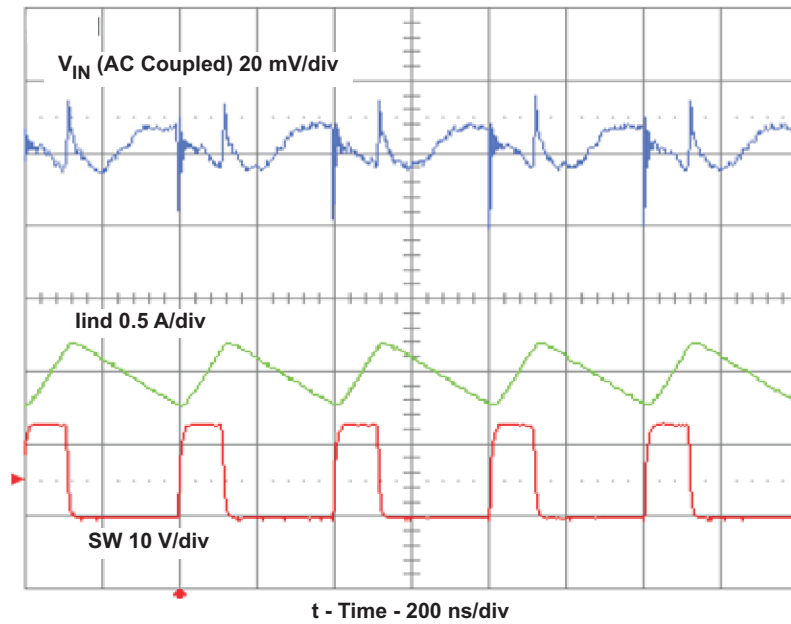


Figure 8. Input Voltage Ripple With 2.2- μ H Inductor and FSW = LOW (High Frequency) and $V_{IN} = 12$ V and $I_{OUT} = 1$ A

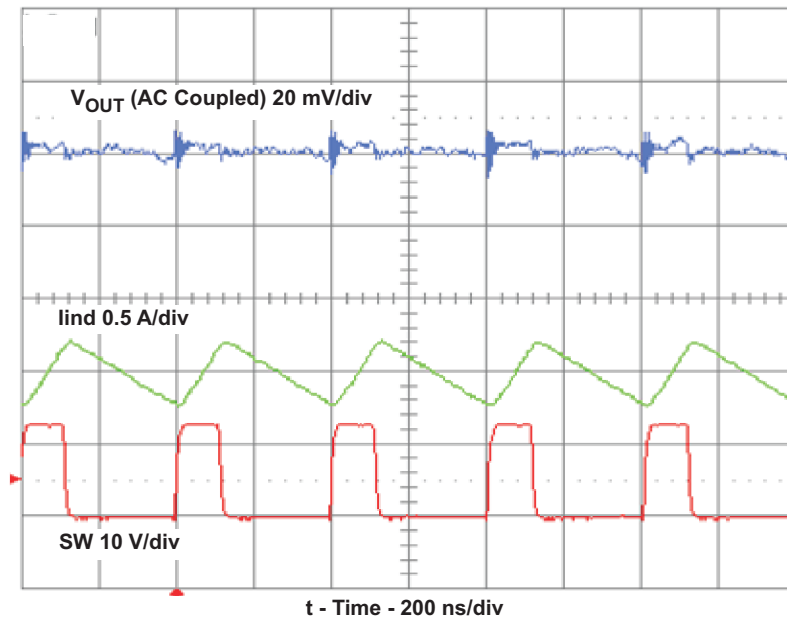


Figure 9. Output Voltage Ripple With 2.2- μ H Inductor and FSW = LOW (High Frequency) and V_{IN} = 12 V and I_{OUT} = 1 A

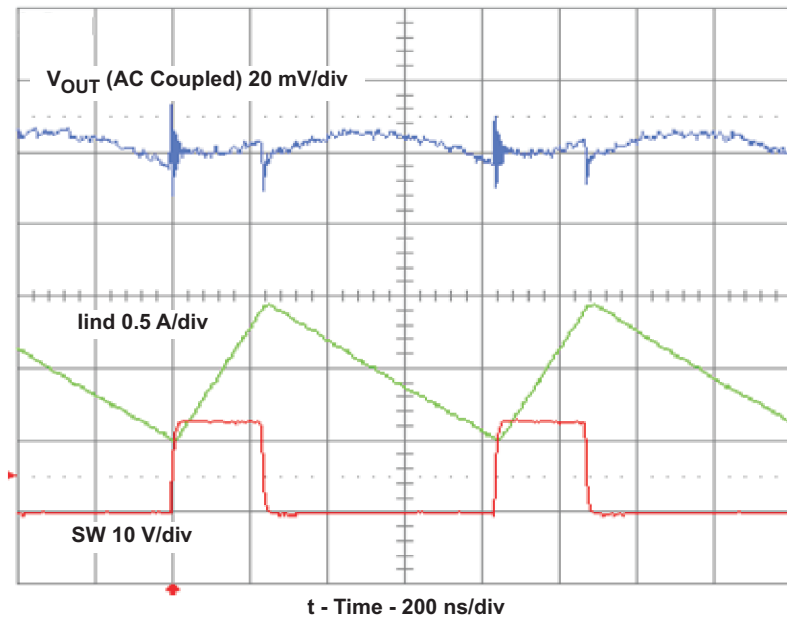


Figure 10. Output Voltage Ripple With 2.2- μ H Inductor and FSW = HIGH (Low Frequency) and V_{IN} = 12 V and I_{OUT} = 1 A

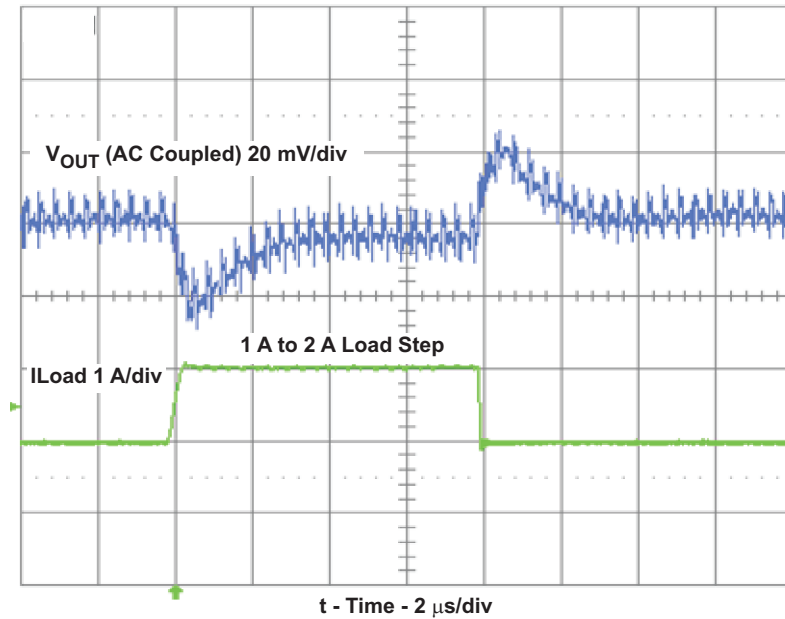


Figure 11. Load Transient Response With 1- μ H Inductor and $V_{IN} = 12$ V

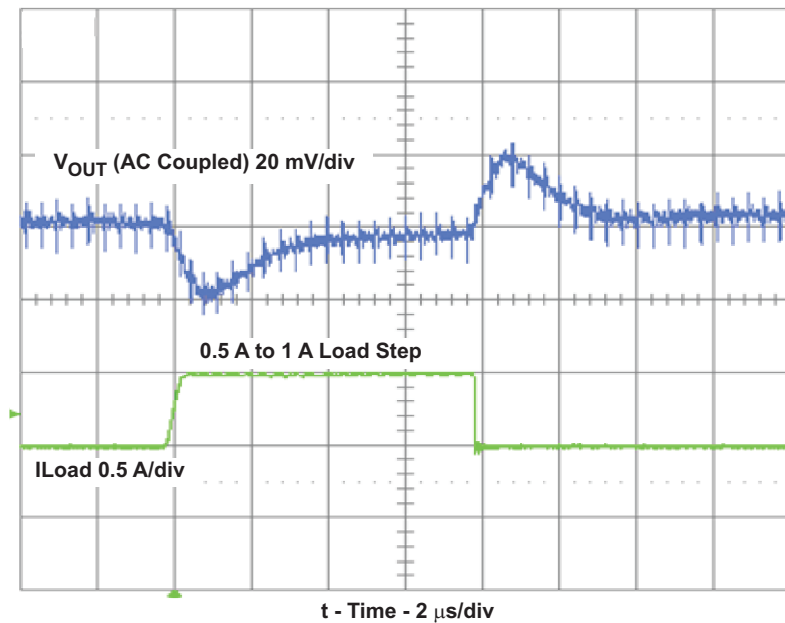


Figure 12. Load Transient Response With 2.2- μ H Inductor and $V_{IN} = 12$ V

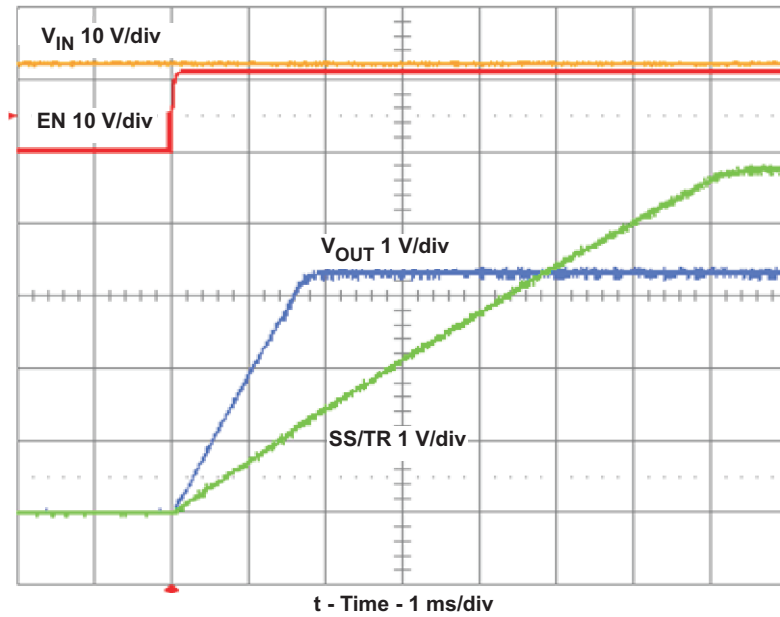


Figure 13. Start-Up on EN with 1-A Load and $V_{IN} = 12\text{ V}$

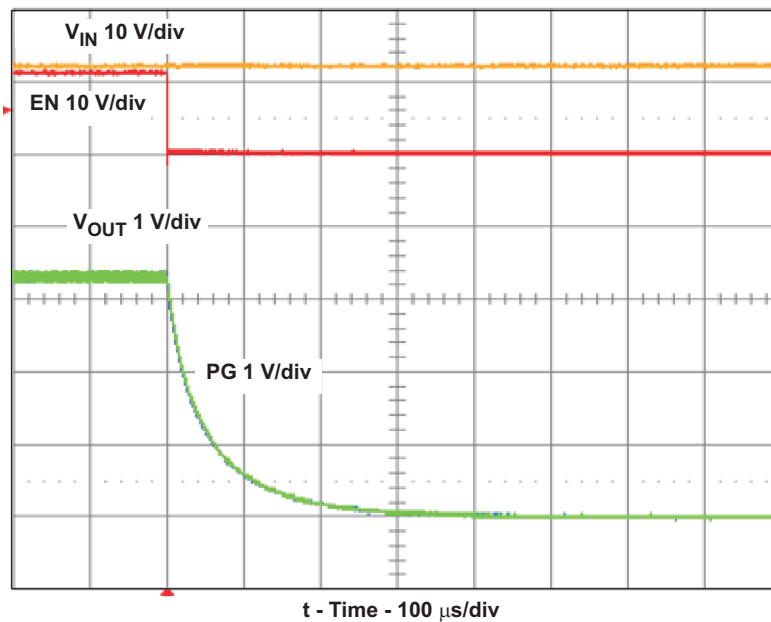


Figure 14. Shutdown on EN with 1-A Load and $V_{IN} = 12\text{ V}$

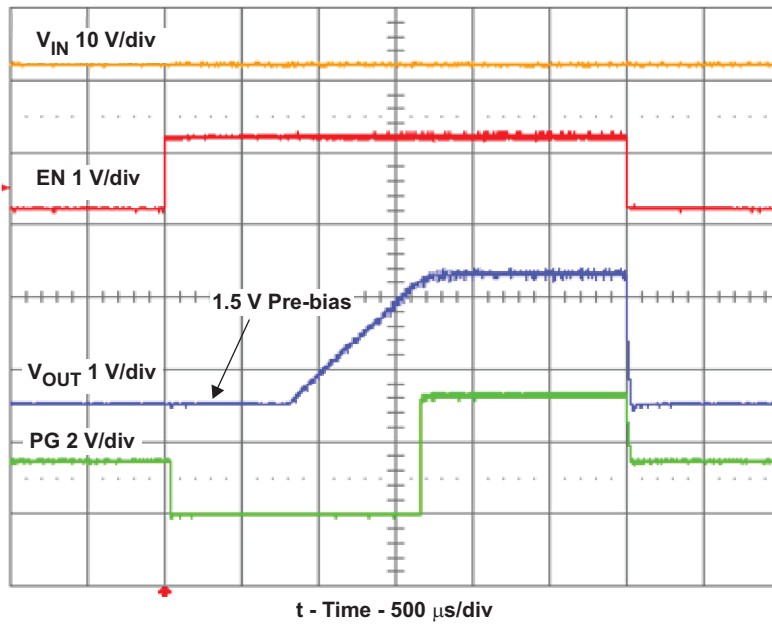


Figure 15. TLV62130 Prebias Start-Up and Shutdown on EN With 1-A Load and $V_{IN} = 12$ V

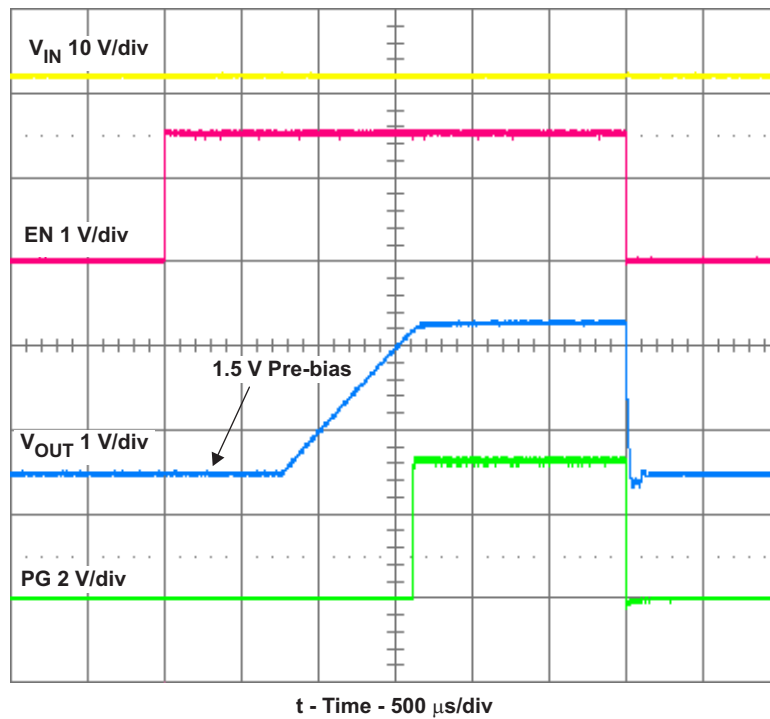
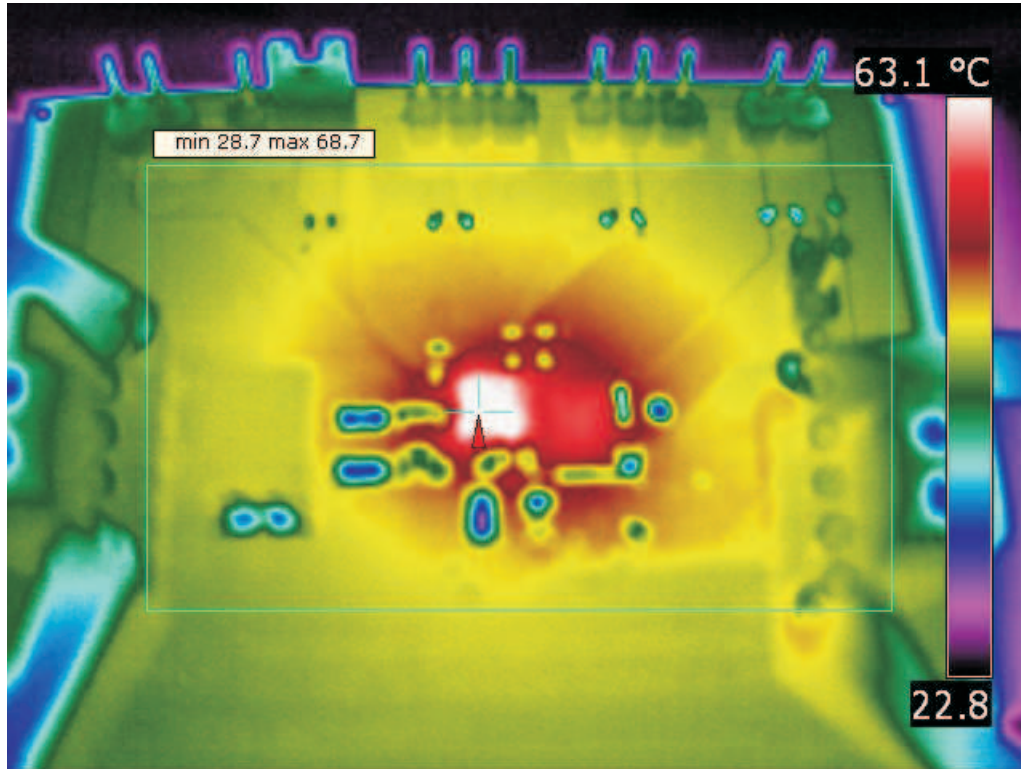
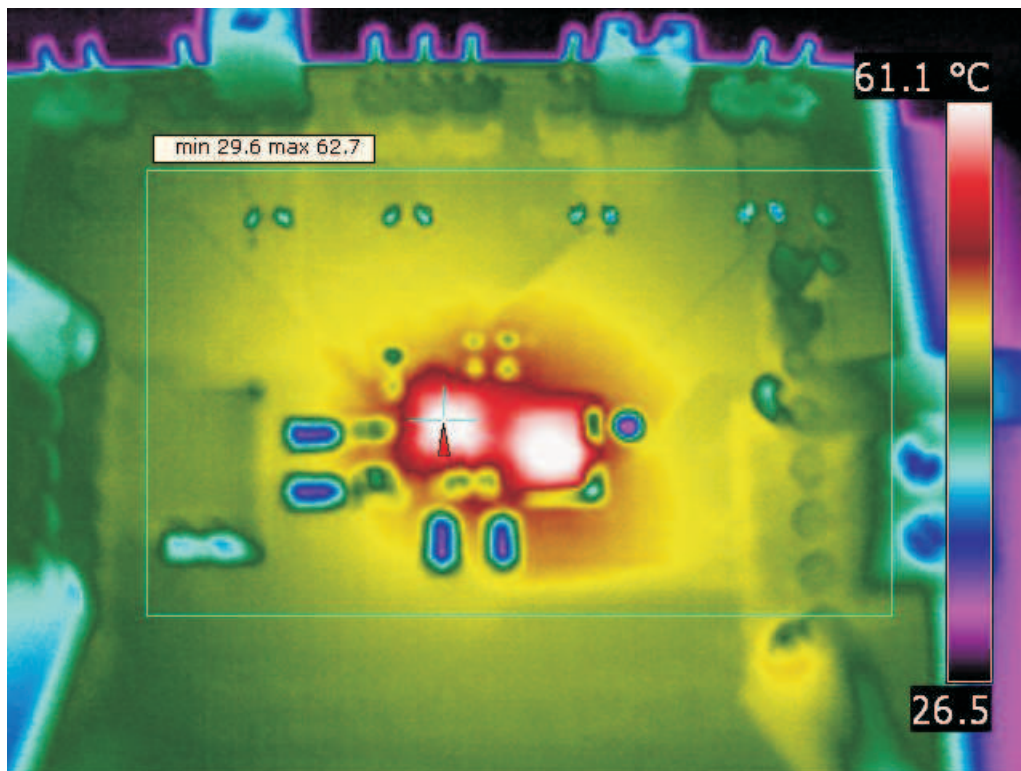


Figure 16. TLV62130A Prebias Start-Up and Shutdown on EN With 1-A Load and $V_{IN} = 12$ V



$V_{IN} = 12\text{ V}$ and $I_{OUT} = 3\text{ A}$ and FSW = LOW (high frequency)

Figure 17. Thermal Performance With 1- μH Inductor



$V_{IN} = 12\text{ V}$ and $I_{OUT} = 3\text{ A}$ and FSW = HIGH (low frequency)

Figure 18. Thermal Performance With 2.2- μH Inductor

4 Board Layout

This section provides the TLV621x0EVM-505 board layout and illustrations.

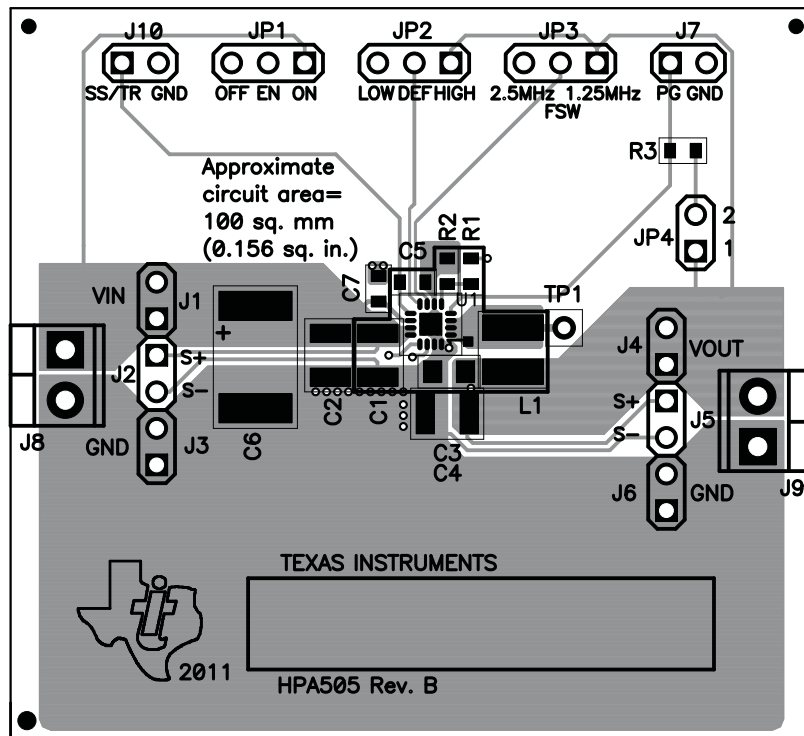


Figure 19. Assembly Layer

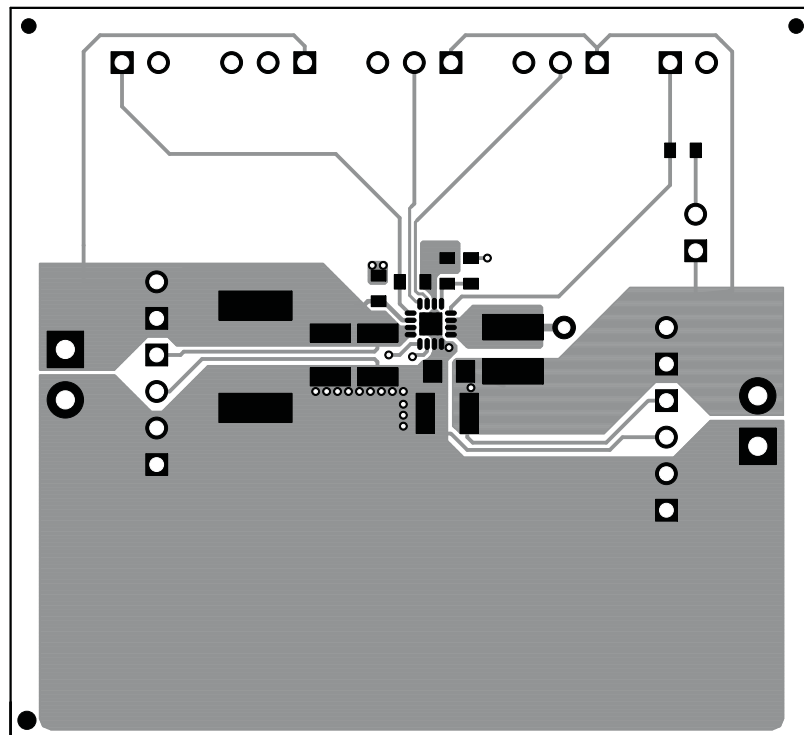


Figure 20. Top Layer Routing

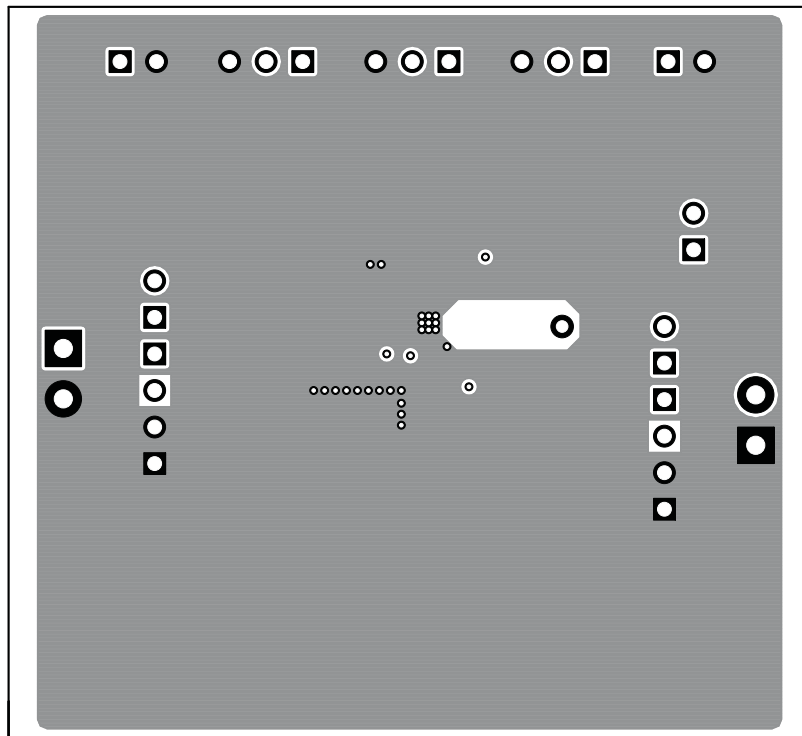


Figure 21. Internal Layer-1 Routing

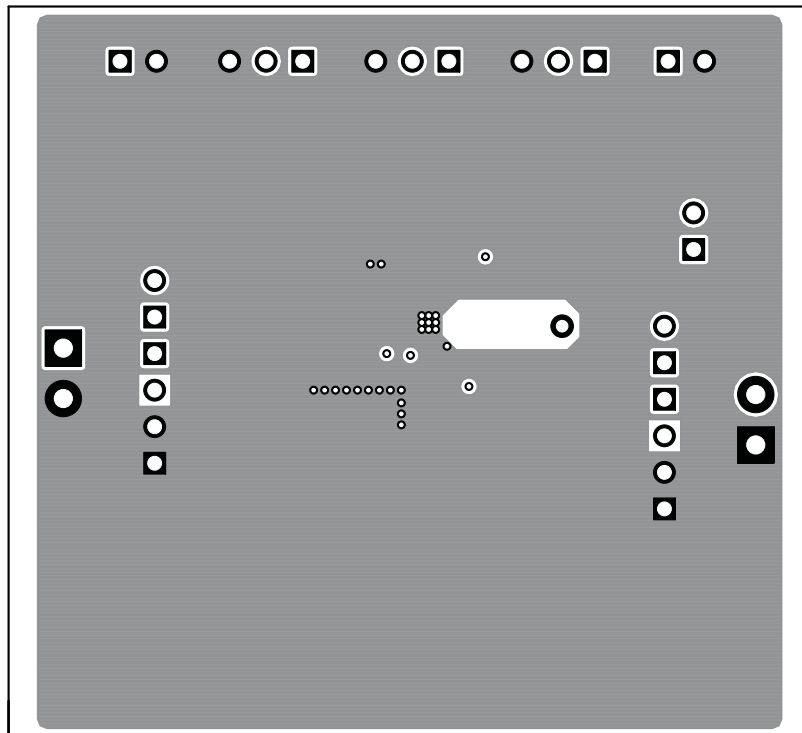


Figure 22. Internal Layer-2 Routing

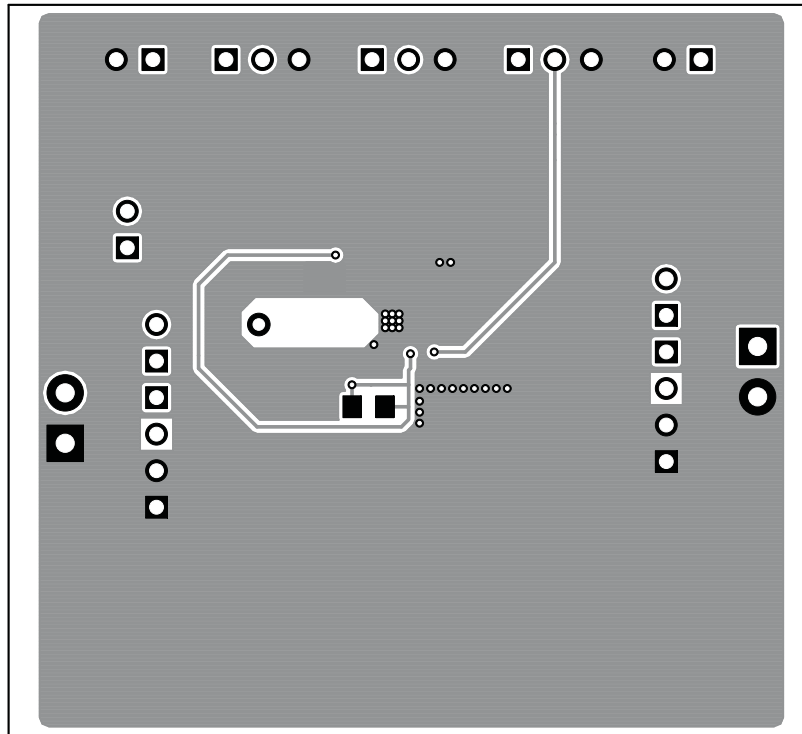


Figure 23. Bottom Layer Routing

5 Schematic and Bill of Materials

This section provides the TLV621x0EVM-505 schematic and bill of materials.

5.1 Schematic

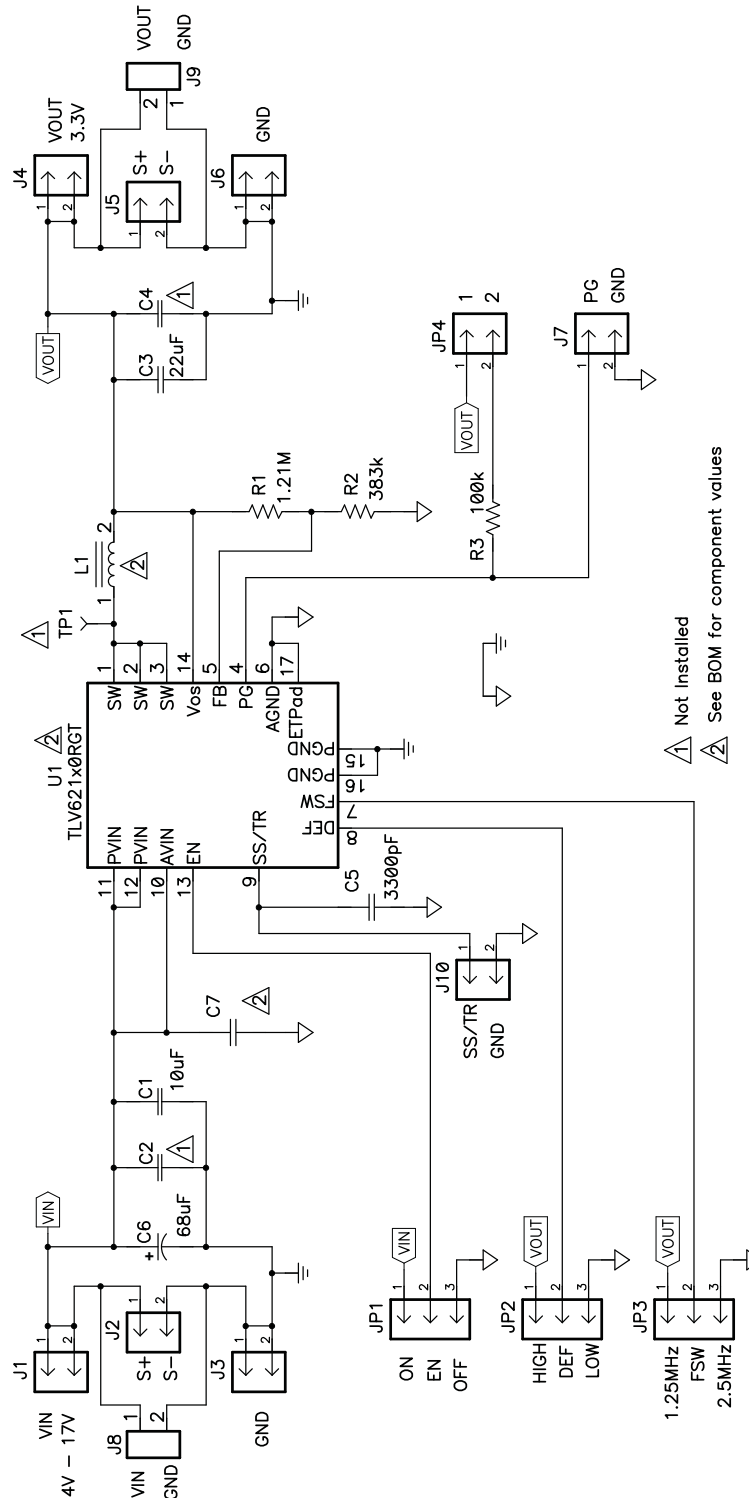


Figure 24. TLV621x0EVM-505 Schematic

5.2 Bill of Materials

Table 2. TLV621x0EVM-505 Bill of Materials

Count		RefDes	Value	Description	Size	Part Number	MFR
-004	-005						
1	1	C1	10 μ F	Capacitor, Ceramic, 25V, X5R, 20%	1210	Std	Std
1	1	C3	22 μ F	Capacitor, Ceramic, 6.3V, X5R, 20%	0805	Std	Std
1	1	C5	3300 pF	Capacitor, Ceramic, 25V, X7R, 10%	0603	Std	Std
1	1	C6	68 μ F	Capacitor, Tantalum, 35V, 68 μ F, \pm 20%	7361[V]	TPSV686M035R0150	AVX
1	0	C7	0.1 μ F	Capacitor, Ceramic, 25V, X5R, 20%	0603	Std	Std
1	0	L1	1.0 μ H	Inductor, Power, 5.1A, \pm 20%	0.165 x 0.165 inch	XFL4020-102ME	Coilcraft
0	1	L1	2.2 μ H	Inductor, Power, 3.5A, \pm 20%	0.165 x 0.165 inch	XFL4020-222ME	Coilcraft
1	1	R1	1.21M	Resistor, Chip, 1/16W, 1%	0603	Std	Std
1	1	R2	383k	Resistor, Chip, 1/16W, 1%	0603	Std	Std
1	1	R3	100k	Resistor, Chip, 1/16W, 1%	0603	Std	Std
1	0	U1 ⁽¹⁾	TLV62130ARGT	IC, 17V 3A Step-Down Converter in 3 mm x 3 mm QFN Package	3 x 3 mm QFN	TLV62130ARGT	TI
0	1	U1 ⁽¹⁾	TLV62150ARGT	IC, 17V 1A Step-Down Converter in 3 mm x 3 mm QFN Package	3 x 3 mm QFN	TLV62150ARGT	TI

⁽¹⁾ EVMs made before August of 2013 use the non-A version of U1. The only difference between these devices is the operation of the PG pin when the device is disabled, as shown in [Figure 15](#) and [Figure 16](#).

EVALUATION BOARD/KIT/MODULE (EVM) ADDITIONAL TERMS

Texas Instruments (TI) provides the enclosed Evaluation Board/Kit/Module (EVM) under the following conditions:

The user assumes all responsibility and liability for proper and safe handling of the goods. Further, the user indemnifies TI from all claims arising from the handling or use of the goods.

Should this evaluation board/kit not meet the specifications indicated in the User's Guide, the board/kit may be returned within 30 days from the date of delivery for a full refund. THE FOREGOING LIMITED WARRANTY IS THE EXCLUSIVE WARRANTY MADE BY SELLER TO BUYER AND IS IN LIEU OF ALL OTHER WARRANTIES, EXPRESSED, IMPLIED, OR STATUTORY, INCLUDING ANY WARRANTY OF MERCHANTABILITY OR FITNESS FOR ANY PARTICULAR PURPOSE. EXCEPT TO THE EXTENT OF THE INDEMNITY SET FORTH ABOVE, NEITHER PARTY SHALL BE LIABLE TO THE OTHER FOR ANY INDIRECT, SPECIAL, INCIDENTAL, OR CONSEQUENTIAL DAMAGES.

Please read the User's Guide and, specifically, the Warnings and Restrictions notice in the User's Guide prior to handling the product. This notice contains important safety information about temperatures and voltages. For additional information on TI's environmental and/or safety programs, please visit www.ti.com/esh or contact TI.

No license is granted under any patent right or other intellectual property right of TI covering or relating to any machine, process, or combination in which such TI products or services might be or are used. TI currently deals with a variety of customers for products, and therefore our arrangement with the user is not exclusive. TI assumes no liability for applications assistance, customer product design, software performance, or infringement of patents or services described herein.

REGULATORY COMPLIANCE INFORMATION

As noted in the EVM User's Guide and/or EVM itself, this EVM and/or accompanying hardware may or may not be subject to the Federal Communications Commission (FCC) and Industry Canada (IC) rules.

For EVMs **not** subject to the above rules, this evaluation board/kit/module is intended for use for ENGINEERING DEVELOPMENT, DEMONSTRATION OR EVALUATION PURPOSES ONLY and is not considered by TI to be a finished end product fit for general consumer use. It generates, uses, and can radiate radio frequency energy and has not been tested for compliance with the limits of computing devices pursuant to part 15 of FCC or ICES-003 rules, which are designed to provide reasonable protection against radio frequency interference. Operation of the equipment may cause interference with radio communications, in which case the user at his own expense will be required to take whatever measures may be required to correct this interference.

General Statement for EVMs including a radio

User Power/Frequency Use Obligations: This radio is intended for development/professional use only in legally allocated frequency and power limits. Any use of radio frequencies and/or power availability of this EVM and its development application(s) must comply with local laws governing radio spectrum allocation and power limits for this evaluation module. It is the user's sole responsibility to only operate this radio in legally acceptable frequency space and within legally mandated power limitations. Any exceptions to this are strictly prohibited and unauthorized by Texas Instruments unless user has obtained appropriate experimental/development licenses from local regulatory authorities, which is responsibility of user including its acceptable authorization.

For EVMs annotated as FCC – FEDERAL COMMUNICATIONS COMMISSION Part 15 Compliant

Caution

This device complies with part 15 of the FCC Rules. Operation is subject to the following two conditions: (1) This device may not cause harmful interference, and (2) this device must accept any interference received, including interference that may cause undesired operation.

Changes or modifications not expressly approved by the party responsible for compliance could void the user's authority to operate the equipment.

FCC Interference Statement for Class A EVM devices

This equipment has been tested and found to comply with the limits for a Class A digital device, pursuant to part 15 of the FCC Rules. These limits are designed to provide reasonable protection against harmful interference when the equipment is operated in a commercial environment. This equipment generates, uses, and can radiate radio frequency energy and, if not installed and used in accordance with the instruction manual, may cause harmful interference to radio communications. Operation of this equipment in a residential area is likely to cause harmful interference in which case the user will be required to correct the interference at his own expense.

FCC Interference Statement for Class B EVM devices

This equipment has been tested and found to comply with the limits for a Class B digital device, pursuant to part 15 of the FCC Rules. These limits are designed to provide reasonable protection against harmful interference in a residential installation. This equipment generates, uses and can radiate radio frequency energy and, if not installed and used in accordance with the instructions, may cause harmful interference to radio communications. However, there is no guarantee that interference will not occur in a particular installation. If this equipment does cause harmful interference to radio or television reception, which can be determined by turning the equipment off and on, the user is encouraged to try to correct the interference by one or more of the following measures:

- Reorient or relocate the receiving antenna.
- Increase the separation between the equipment and receiver.
- Connect the equipment into an outlet on a circuit different from that to which the receiver is connected.
- Consult the dealer or an experienced radio/TV technician for help.

For EVMs annotated as IC – INDUSTRY CANADA Compliant

This Class A or B digital apparatus complies with Canadian ICES-003.

Changes or modifications not expressly approved by the party responsible for compliance could void the user's authority to operate the equipment.

Concerning EVMs including radio transmitters

This device complies with Industry Canada licence-exempt RSS standard(s). Operation is subject to the following two conditions: (1) this device may not cause interference, and (2) this device must accept any interference, including interference that may cause undesired operation of the device.

Concerning EVMs including detachable antennas

Under Industry Canada regulations, this radio transmitter may only operate using an antenna of a type and maximum (or lesser) gain approved for the transmitter by Industry Canada. To reduce potential radio interference to other users, the antenna type and its gain should be so chosen that the equivalent isotropically radiated power (e.i.r.p.) is not more than that necessary for successful communication.

This radio transmitter has been approved by Industry Canada to operate with the antenna types listed in the user guide with the maximum permissible gain and required antenna impedance for each antenna type indicated. Antenna types not included in this list, having a gain greater than the maximum gain indicated for that type, are strictly prohibited for use with this device.

Cet appareil numérique de la classe A ou B est conforme à la norme NMB-003 du Canada.

Les changements ou les modifications pas expressément approuvés par la partie responsable de la conformité ont pu vider l'autorité de l'utilisateur pour actionner l'équipement.

Concernant les EVMs avec appareils radio

Le présent appareil est conforme aux CNR d'Industrie Canada applicables aux appareils radio exempts de licence. L'exploitation est autorisée aux deux conditions suivantes : (1) l'appareil ne doit pas produire de brouillage, et (2) l'utilisateur de l'appareil doit accepter tout brouillage radioélectrique subi, même si le brouillage est susceptible d'en compromettre le fonctionnement.

Concernant les EVMs avec antennes détachables

Conformément à la réglementation d'Industrie Canada, le présent émetteur radio peut fonctionner avec une antenne d'un type et d'un gain maximal (ou inférieur) approuvé pour l'émetteur par Industrie Canada. Dans le but de réduire les risques de brouillage radioélectrique à l'intention des autres utilisateurs, il faut choisir le type d'antenne et son gain de sorte que la puissance isotrope rayonnée équivalente (p.i.r.e.) ne dépasse pas l'intensité nécessaire à l'établissement d'une communication satisfaisante.

Le présent émetteur radio a été approuvé par Industrie Canada pour fonctionner avec les types d'antenne énumérés dans le manuel d'usage et ayant un gain admissible maximal et l'impédance requise pour chaque type d'antenne. Les types d'antenne non inclus dans cette liste, ou dont le gain est supérieur au gain maximal indiqué, sont strictement interdits pour l'exploitation de l'émetteur.

【Important Notice for Users of EVMs for RF Products in Japan】

This development kit is NOT certified as Confirming to Technical Regulations of Radio Law of Japan

If you use this product in Japan, you are required by Radio Law of Japan to follow the instructions below with respect to this product:

1. Use this product in a shielded room or any other test facility as defined in the notification #173 issued by Ministry of Internal Affairs and Communications on March 28, 2006, based on Sub-section 1.1 of Article 6 of the Ministry's Rule for Enforcement of Radio Law of Japan,
2. Use this product only after you obtained the license of Test Radio Station as provided in Radio Law of Japan with respect to this product, or
3. Use of this product only after you obtained the Technical Regulations Conformity Certification as provided in Radio Law of Japan with respect to this product. Also, please do not transfer this product, unless you give the same notice above to the transferee. Please note that if you could not follow the instructions above, you will be subject to penalties of Radio Law of Japan.

Texas Instruments Japan Limited
(address) 24-1, Nishi-Shinjuku 6 chome, Shinjuku-ku, Tokyo, Japan

<http://www.tij.co.jp>

【無線電波を送信する製品の開発キットをお使いになる際の注意事項】

本開発キットは技術基準適合証明を受けておりません。

本製品のご使用に際しては、電波法遵守のため、以下のいずれかの措置を取っていただく必要がありますのでご注意ください。

1. 電波法施行規則第6条第1項第1号に基づく平成18年3月28日総務省告示第173号で定められた電波暗室等の試験設備でご使用いただく。
2. 実験局の免許を取得後ご使用いただく。
3. 技術基準適合証明を取得後ご使用いただく。

なお、本製品は、上記の「ご使用にあたっての注意」を譲渡先、移転先に通知しない限り、譲渡、移転できないものとします。

上記を遵守頂けない場合は、電波法の罰則が適用される可能性があることをご留意ください。

日本テキサス・インスツルメンツ株式会社
東京都新宿区西新宿6丁目24番1号
西新宿三井ビル

<http://www.tij.co.jp>

EVALUATION BOARD/KIT/MODULE (EVM) WARNINGS, RESTRICTIONS AND DISCLAIMERS

For Feasibility Evaluation Only, in Laboratory/Development Environments. Unless otherwise indicated, this EVM is not a finished electrical equipment and not intended for consumer use. It is intended solely for use for preliminary feasibility evaluation in laboratory/development environments by technically qualified electronics experts who are familiar with the dangers and application risks associated with handling electrical mechanical components, systems and subsystems. It should not be used as all or part of a finished end product.

Your Sole Responsibility and Risk. You acknowledge, represent and agree that:

1. You have unique knowledge concerning Federal, State and local regulatory requirements (including but not limited to Food and Drug Administration regulations, if applicable) which relate to your products and which relate to your use (and/or that of your employees, affiliates, contractors or designees) of the EVM for evaluation, testing and other purposes.
2. You have full and exclusive responsibility to assure the safety and compliance of your products with all such laws and other applicable regulatory requirements, and also to assure the safety of any activities to be conducted by you and/or your employees, affiliates, contractors or designees, using the EVM. Further, you are responsible to assure that any interfaces (electronic and/or mechanical) between the EVM and any human body are designed with suitable isolation and means to safely limit accessible leakage currents to minimize the risk of electrical shock hazard.
3. Since the EVM is not a completed product, it may not meet all applicable regulatory and safety compliance standards (such as UL, CSA, VDE, CE, RoHS and WEEE) which may normally be associated with similar items. You assume full responsibility to determine and/or assure compliance with any such standards and related certifications as may be applicable. You will employ reasonable safeguards to ensure that your use of the EVM will not result in any property damage, injury or death, even if the EVM should fail to perform as described or expected.
4. You will take care of proper disposal and recycling of the EVM's electronic components and packing materials.

Certain Instructions. It is important to operate this EVM within TI's recommended specifications and environmental considerations per the user guidelines. Exceeding the specified EVM ratings (including but not limited to input and output voltage, current, power, and environmental ranges) may cause property damage, personal injury or death. If there are questions concerning these ratings please contact a TI field representative prior to connecting interface electronics including input power and intended loads. Any loads applied outside of the specified output range may result in unintended and/or inaccurate operation and/or possible permanent damage to the EVM and/or interface electronics. Please consult the EVM User's Guide prior to connecting any load to the EVM output. If there is uncertainty as to the load specification, please contact a TI field representative. During normal operation, some circuit components may have case temperatures greater than 60°C as long as the input and output are maintained at a normal ambient operating temperature. These components include but are not limited to linear regulators, switching transistors, pass transistors, and current sense resistors which can be identified using the EVM schematic located in the EVM User's Guide. When placing measurement probes near these devices during normal operation, please be aware that these devices may be very warm to the touch. As with all electronic evaluation tools, only qualified personnel knowledgeable in electronic measurement and diagnostics normally found in development environments should use these EVMs.

Agreement to Defend, Indemnify and Hold Harmless. You agree to defend, indemnify and hold TI, its licensors and their representatives harmless from and against any and all claims, damages, losses, expenses, costs and liabilities (collectively, "Claims") arising out of or in connection with any use of the EVM that is not in accordance with the terms of the agreement. This obligation shall apply whether Claims arise under law of tort or contract or any other legal theory, and even if the EVM fails to perform as described or expected.

Safety-Critical or Life-Critical Applications. If you intend to evaluate the components for possible use in safety critical applications (such as life support) where a failure of the TI product would reasonably be expected to cause severe personal injury or death, such as devices which are classified as FDA Class III or similar classification, then you must specifically notify TI of such intent and enter into a separate Assurance and Indemnity Agreement.

Mailing Address: Texas Instruments, Post Office Box 655303, Dallas, Texas 75265
Copyright © 2013, Texas Instruments Incorporated

IMPORTANT NOTICE

Texas Instruments Incorporated and its subsidiaries (TI) reserve the right to make corrections, enhancements, improvements and other changes to its semiconductor products and services per JESD46, latest issue, and to discontinue any product or service per JESD48, latest issue. Buyers should obtain the latest relevant information before placing orders and should verify that such information is current and complete. All semiconductor products (also referred to herein as "components") are sold subject to TI's terms and conditions of sale supplied at the time of order acknowledgment.

TI warrants performance of its components to the specifications applicable at the time of sale, in accordance with the warranty in TI's terms and conditions of sale of semiconductor products. Testing and other quality control techniques are used to the extent TI deems necessary to support this warranty. Except where mandated by applicable law, testing of all parameters of each component is not necessarily performed.

TI assumes no liability for applications assistance or the design of Buyers' products. Buyers are responsible for their products and applications using TI components. To minimize the risks associated with Buyers' products and applications, Buyers should provide adequate design and operating safeguards.

TI does not warrant or represent that any license, either express or implied, is granted under any patent right, copyright, mask work right, or other intellectual property right relating to any combination, machine, or process in which TI components or services are used. Information published by TI regarding third-party products or services does not constitute a license to use such products or services or a warranty or endorsement thereof. Use of such information may require a license from a third party under the patents or other intellectual property of the third party, or a license from TI under the patents or other intellectual property of TI.

Reproduction of significant portions of TI information in TI data books or data sheets is permissible only if reproduction is without alteration and is accompanied by all associated warranties, conditions, limitations, and notices. TI is not responsible or liable for such altered documentation. Information of third parties may be subject to additional restrictions.

Resale of TI components or services with statements different from or beyond the parameters stated by TI for that component or service voids all express and any implied warranties for the associated TI component or service and is an unfair and deceptive business practice. TI is not responsible or liable for any such statements.

Buyer acknowledges and agrees that it is solely responsible for compliance with all legal, regulatory and safety-related requirements concerning its products, and any use of TI components in its applications, notwithstanding any applications-related information or support that may be provided by TI. Buyer represents and agrees that it has all the necessary expertise to create and implement safeguards which anticipate dangerous consequences of failures, monitor failures and their consequences, lessen the likelihood of failures that might cause harm and take appropriate remedial actions. Buyer will fully indemnify TI and its representatives against any damages arising out of the use of any TI components in safety-critical applications.

In some cases, TI components may be promoted specifically to facilitate safety-related applications. With such components, TI's goal is to help enable customers to design and create their own end-product solutions that meet applicable functional safety standards and requirements. Nonetheless, such components are subject to these terms.

No TI components are authorized for use in FDA Class III (or similar life-critical medical equipment) unless authorized officers of the parties have executed a special agreement specifically governing such use.

Only those TI components which TI has specifically designated as military grade or "enhanced plastic" are designed and intended for use in military/aerospace applications or environments. Buyer acknowledges and agrees that any military or aerospace use of TI components which have **not** been so designated is solely at the Buyer's risk, and that Buyer is solely responsible for compliance with all legal and regulatory requirements in connection with such use.

TI has specifically designated certain components as meeting ISO/TS16949 requirements, mainly for automotive use. In any case of use of non-designated products, TI will not be responsible for any failure to meet ISO/TS16949.

Products

Audio	www.ti.com/audio
Amplifiers	amplifier.ti.com
Data Converters	dataconverter.ti.com
DLP® Products	www.dlp.com
DSP	dsp.ti.com
Clocks and Timers	www.ti.com/clocks
Interface	interface.ti.com
Logic	logic.ti.com
Power Mgmt	power.ti.com
Microcontrollers	microcontroller.ti.com
RFID	www.ti-rfid.com
OMAP Applications Processors	www.ti.com/omap
Wireless Connectivity	www.ti.com/wirelessconnectivity

Applications

Automotive and Transportation	www.ti.com/automotive
Communications and Telecom	www.ti.com/communications
Computers and Peripherals	www.ti.com/computers
Consumer Electronics	www.ti.com/consumer-apps
Energy and Lighting	www.ti.com/energy
Industrial	www.ti.com/industrial
Medical	www.ti.com/medical
Security	www.ti.com/security
Space, Avionics and Defense	www.ti.com/space-avionics-defense
Video and Imaging	www.ti.com/video

TI E2E Community

e2e.ti.com



Стандарт Электрон Связь

Мы молодая и активно развивающаяся компания в области поставок электронных компонентов. Мы поставляем электронные компоненты отечественного и импортного производства напрямую от производителей и с крупнейших складов мира.

Благодаря сотрудничеству с мировыми поставщиками мы осуществляем комплексные и плановые поставки широчайшего спектра электронных компонентов.

Собственная эффективная логистика и склад в обеспечивает надежную поставку продукции в точно указанные сроки по всей России.

Мы осуществляем техническую поддержку нашим клиентам и предпродажную проверку качества продукции. На все поставляемые продукты мы предоставляем гарантию .

Осуществляем поставки продукции под контролем ВП МО РФ на предприятия военно-промышленного комплекса России , а также работаем в рамках 275 ФЗ с открытием отдельных счетов в уполномоченном банке. Система менеджмента качества компании соответствует требованиям ГОСТ ISO 9001.

Минимальные сроки поставки, гибкие цены, неограниченный ассортимент и индивидуальный подход к клиентам являются основой для выстраивания долгосрочного и эффективного сотрудничества с предприятиями радиоэлектронной промышленности, предприятиями ВПК и научно-исследовательскими институтами России.

С нами вы становитесь еще успешнее!

Наши контакты:

Телефон: +7 812 627 14 35

Электронная почта: sales@st-electron.ru

Адрес: 198099, Санкт-Петербург,
Промышленная ул, дом № 19, литера Н,
помещение 100-Н Офис 331