

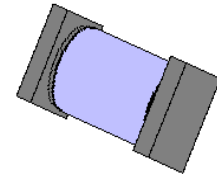
**VOIDLESS-HERMETICALLYSEALED
SURFACE MOUNT ULTRA FAST
RECOVERY GLASS RECTIFIERS**

DESCRIPTION

This "Ultrafast Recovery" rectifier diode series is military qualified to MIL-PRF-19500/585 and is ideal for high-reliability applications where a failure cannot be tolerated. These industry-recognized 1.5 to 2.0 Amp rated rectifiers for working peak reverse voltages from 200 to 1000 volts are hermetically sealed with voidless-glass construction using an internal "Category I" metallurgical bond. These devices are also available in axial-leaded packages for thru-hole mounting (see separate data sheet for 1N6620 thru 1N6625). Microsemi also offers numerous other rectifier products to meet higher and lower current ratings with various recovery time speed requirements including standard, fast and ultrafast device types in both through-hole and surface mount packages.

IMPORTANT: For the most current data, consult MICROSEMI's website: <http://www.microsemi.com>

APPEARANCE



**Package "A"
or D-5A**

FEATURES

- Surface mount series equivalent to the JEDEC registered 1N6620 to 1N6625 series
- Voidless hermetically sealed glass package
- Extremely robust construction
- Triple-layer passivation
- Internal "Category I" Metallurgical bonds
- JAN, JANTX, and JANTXV available per MIL-PRF-19500/585
- Further options for screening in accordance with MIL-PRF-19500 for JANS by using a "SP" prefix, e.g. SP6620US, SP6624US, etc.
- Axial-leaded equivalents also available (see separate data sheet for 1N6620 thru 1N6625)

MAXIMUM RATINGS

- Junction Temperature: -65°C to +150°C
- Storage Temperature: -65°C to +175°C
- Peak Forward Surge Current @ 25°C: 20 Amps (except 1N6625 which is 15 Amps)
Note: Test pulse = 8.3 ms, half-sine wave.
- Average Rectified Forward Current (I_O) at T_{EC}=+110°C:
1N6620 thru 1N6622: 2.0 Amps
1N6623 thru 1N6625: 1.5 Amps
(Derate linearly at 1.5%/°C for T_{EC} > +110°C)
- Average Rectified Forward Current (I_O) at T_A=25°C:
1N6620 thru 1N6622: 1.2 Amps
1N6623 thru 1N6625: 1.0 Amp
(Derate linearly at 0.67%/°C for T_A > +25°C. This I_O rating is typical for PC boards where thermal resistance from mounting point to ambient is sufficiently controlled where T_{J(max)} is not exceeded.)
- Thermal Resistance junction to endcap (R_{θJEC}): 13°C/W
- Capacitance at V_R= 10 V: 10 pF
- Solder temperature: 260°C for 10 s (maximum)

APPLICATIONS / BENEFITS

- Ultrafast recovery rectifier series 200 to 1000 V
- Military and other high-reliability applications
- Switching power supplies or other applications requiring extremely fast switching & low forward loss
- High forward surge current capability
- Low thermal resistance
- Controlled avalanche with peak reverse power capability
- Inherently radiation hard as described in Microsemi MicroNote 050

MECHANICAL AND PACKAGING

- CASE: Hermetically sealed voidless hard glass with Tungsten slugs
- TERMINATIONS: End caps are Copper with Tin/Lead (Sn/Pb) finish. Note: Previous inventory had solid Silver end caps with Tin/Lead plating.
- MARKING: Cathode band only
- POLARITY: Cathode indicated by band
- Tape & Reel option: Standard per EIA-481-B
- Weight: 193 mg
- See package dimensions and recommended pad layout on last page

**VOIDLESS-HERMETICALLYSEALED
SURFACE MOUNT ULTRA FAST
RECOVERY GLASS RECTIFIERS**

ELECTRICAL CHARACTERISTICS @ 25°C

TYPE NUMBER	MINIMUM BREAK-DOWN VOLTAGE V_R $I_R = 50\mu A$	MAXIMUM FORWARD VOLTAGE $V_F @ I_F$		WORKING PEAK REVERSE VOLTAGE V_{RWM}	MAXIMUM REVERSE CURRENT $I_R @ V_{RWM}$		MAXIMUM REVERSE RECOVERY TIME (LOW CURRENT) t_{rr} Note 1	MAXIMUM REVERSE RECOVERY TIME (HIGH CURRENT) t_{rr} Note 2	PEAK RECOVERY CURRENT $I_{RM} (rec)$ $I_F = 2A,$ $100A/\mu s$ Note 2	FORWARD RECOVERY VOLTAGE $V_{FRM} Max$ $I_F = 0.5A$ $t_{fr} = 12ns$	
		V	V @ A		V @ A	$T_A = 25^\circ C$					
						μA					μA
1N6620	220	1.40V @ 1.2A	1.60V @ 2.0A	200	0.5	150	30	45	3.5	12	
1N6621	440	1.40V @ 1.2A	1.60V @ 2.0A	400	0.5	150	30	45	3.5	12	
1N6622	660	1.40V @ 1.2A	1.60V @ 2.0A	600	0.5	150	30	45	3.5	12	
1N6623	880	1.55V @ 1.0A	1.80V @ 1.5A	800	0.5	150	50	60	4.2	18	
1N6624	990	1.55V @ 1.0A	1.80V @ 1.5A	900	0.5	150	50	60	4.2	18	
1N6625	1100	1.75V @ 1.0A	1.95V @ 1.5A	1000	1.0	200	60	80	5.0	30	

NOTE 1: Low Current Reverse Recovery Time Test Conditions: $I_F = 0.5A$, $I_{RM} = 1.0A$, $I_{R(REC)} = 0.25A$ per MIL-STD-750, Method 4031, Condition B.

NOTE 2: High Current Reverse Recovery Time Test Conditions: $I_F = 2A$, $di/dt = 100 A/\mu s$ MIL-STD-750, Method 4031, Condition D.

SYMBOLS & DEFINITIONS

Symbol	Definition
V_{BR}	Minimum Breakdown Voltage: The minimum voltage the device will exhibit at a specified current.
V_{RWM}	Working Peak Reverse Voltage: The maximum peak voltage that can be applied over the operating temperature range.
V_F	Maximum Forward Voltage: The maximum forward voltage the device will exhibit at a specified current.
I_R	Maximum Reverse Current: The maximum reverse (leakage) current that will flow at the specified voltage and temperature.
C	Capacitance: The capacitance of the TVS as defined @ 0 volts at a frequency of 1 MHz and stated in picofarads.
t_{rr}	Reverse Recovery Time: The time interval between the instant the current passes through zero when changing from the forward direction to the reverse direction and a specified recovery decay point after a peak reverse current is reached.

CHARTS AND GRAPHS

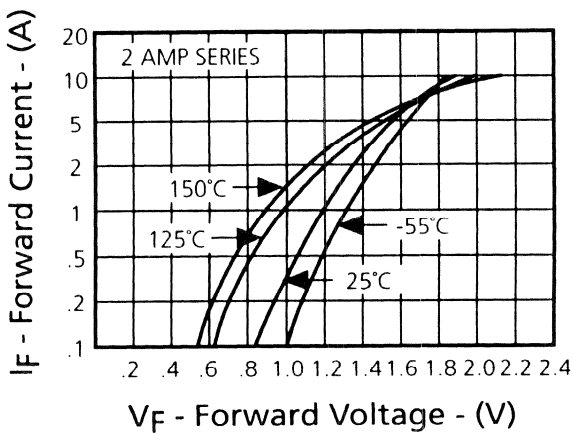


FIGURE 1
Typical Forward Current
vs
Forward Voltage

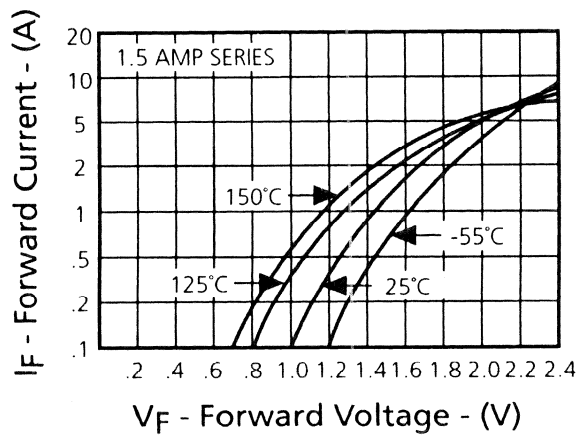


FIGURE 2
Typical Forward Current
vs
Forward Voltage

**VOIDLESS-HERMETICALLYSEALED
SURFACE MOUNT ULTRA FAST
RECOVERY GLASS RECTIFIERS**

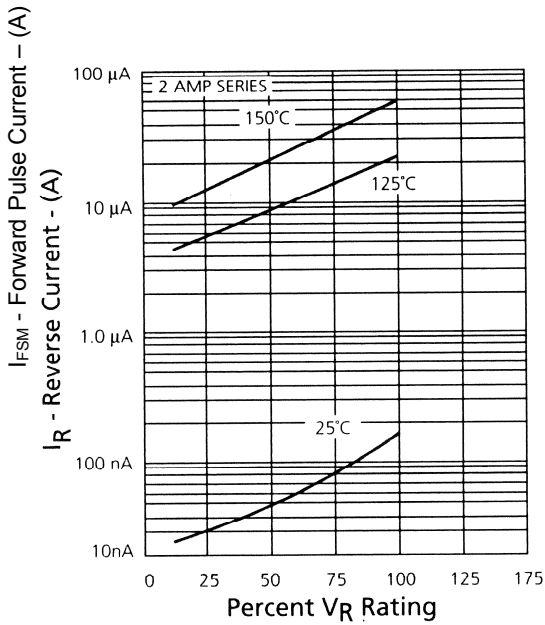


FIGURE 3
Typical Reverse Current vs.
Applied Reverse Voltage

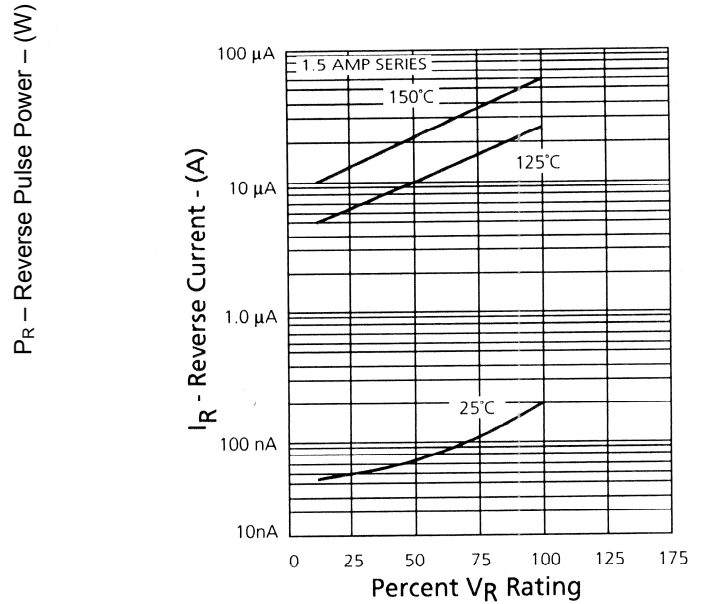


FIGURE 4
Typical Reverse Current vs.
Applied Reverse Voltage

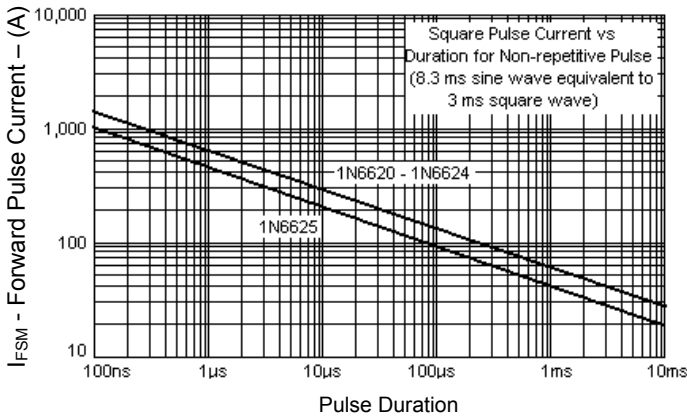


FIGURE 5
Forward Pulse Current vs.
Pulse Duration

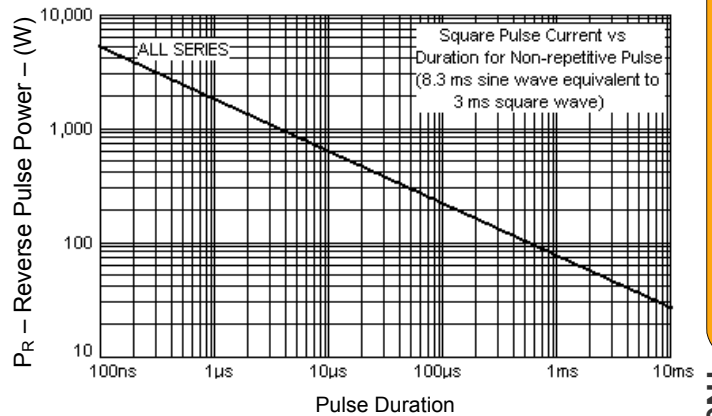
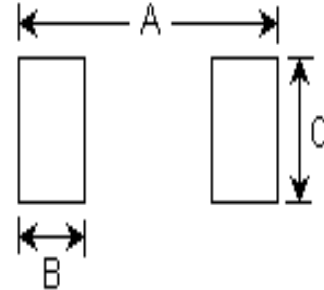
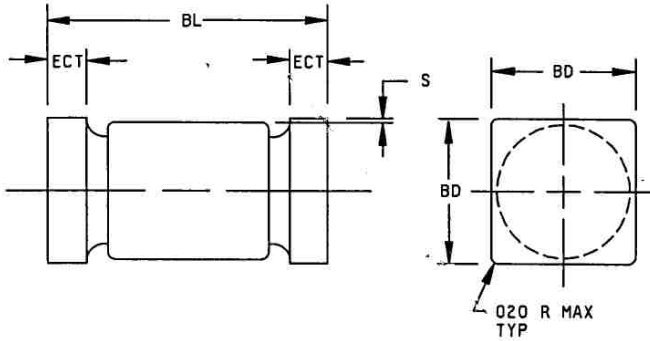


FIGURE 6
Reverse Pulse Power vs.
Pulse Duration

PACKAGE DIMENSIONS



PAD LAYOUT

NOTE: This Package Outline has also previously been identified as "D-5A"

	INCHES		mm	
	MIN	MAX	MIN	MAX
BD	.097	.103	2.46	2.62
BL	.185	.200	4.70	5.08
ECT	.019	.028	0.48	0.71
S	.003	---	0.08	---

	INCHES	mm
A	0.246	6.25
B	0.067	1.70
C	0.105	2.67

Note: If mounting requires adhesive separate from the solder, an additional 0.060 inch diameter contact may be placed in the center between the pads as an optional spot for cement.



Стандарт Электрон Связь

Мы молодая и активно развивающаяся компания в области поставок электронных компонентов. Мы поставляем электронные компоненты отечественного и импортного производства напрямую от производителей и с крупнейших складов мира.

Благодаря сотрудничеству с мировыми поставщиками мы осуществляем комплексные и плановые поставки широчайшего спектра электронных компонентов.

Собственная эффективная логистика и склад в обеспечивает надежную поставку продукции в точно указанные сроки по всей России.

Мы осуществляем техническую поддержку нашим клиентам и предпродажную проверку качества продукции. На все поставляемые продукты мы предоставляем гарантию .

Осуществляем поставки продукции под контролем ВП МО РФ на предприятия военно-промышленного комплекса России , а также работаем в рамках 275 ФЗ с открытием отдельных счетов в уполномоченном банке. Система менеджмента качества компании соответствует требованиям ГОСТ ISO 9001.

Минимальные сроки поставки, гибкие цены, неограниченный ассортимент и индивидуальный подход к клиентам являются основой для выстраивания долгосрочного и эффективного сотрудничества с предприятиями радиоэлектронной промышленности, предприятиями ВПК и научно-исследовательскими институтами России.

С нами вы становитесь еще успешнее!

Наши контакты:

Телефон: +7 812 627 14 35

Электронная почта: sales@st-electron.ru

Адрес: 198099, Санкт-Петербург,
Промышленная ул, дом № 19, литера Н,
помещение 100-Н Офис 331